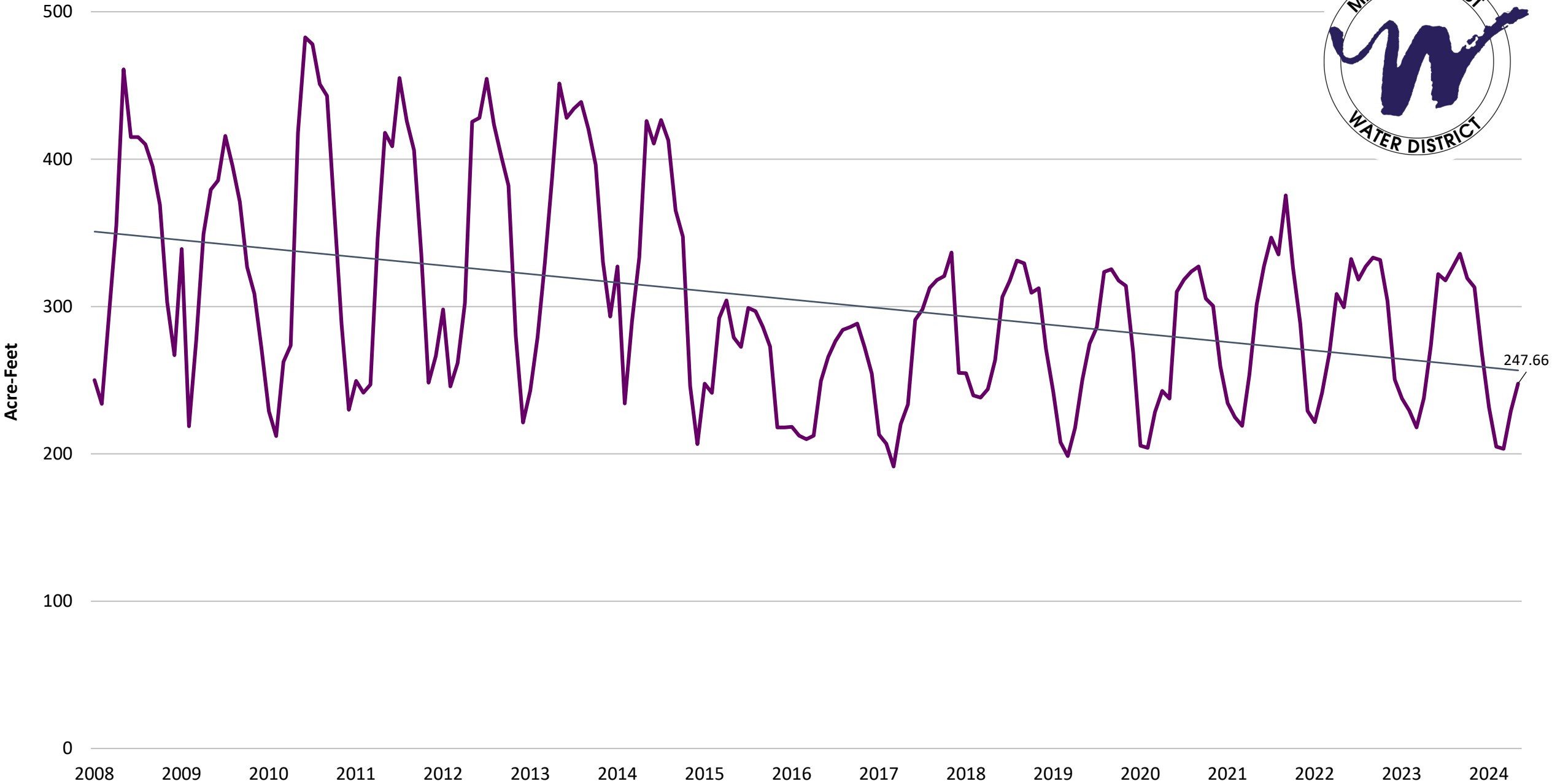


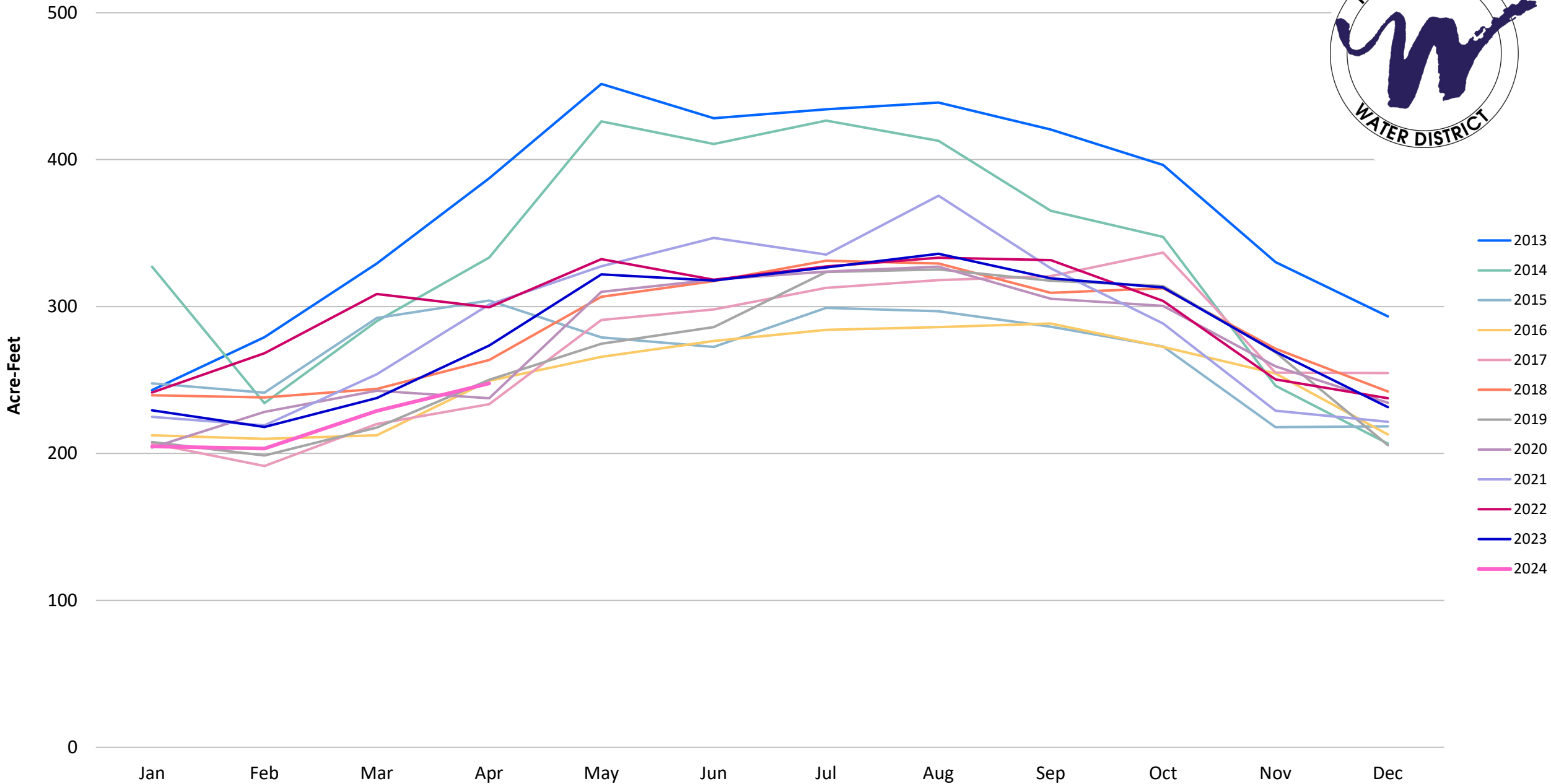
April 2024 Water Production & Consumption



2008-2024 YTD Total Well Production by Month



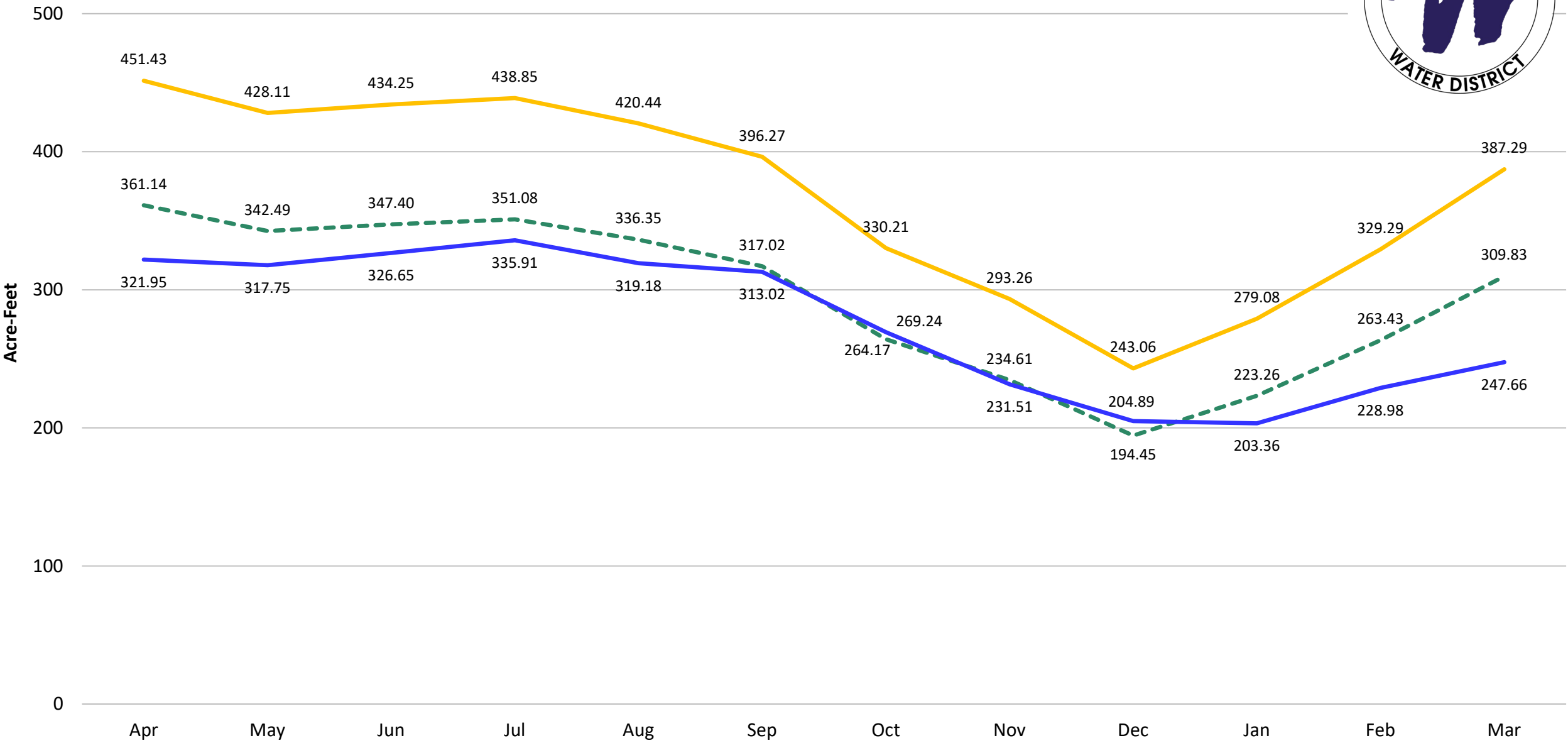
2013-2024 YTD Total Well Production by Month



2023-2024 YTD Production vs. Water Production Reduction Goals



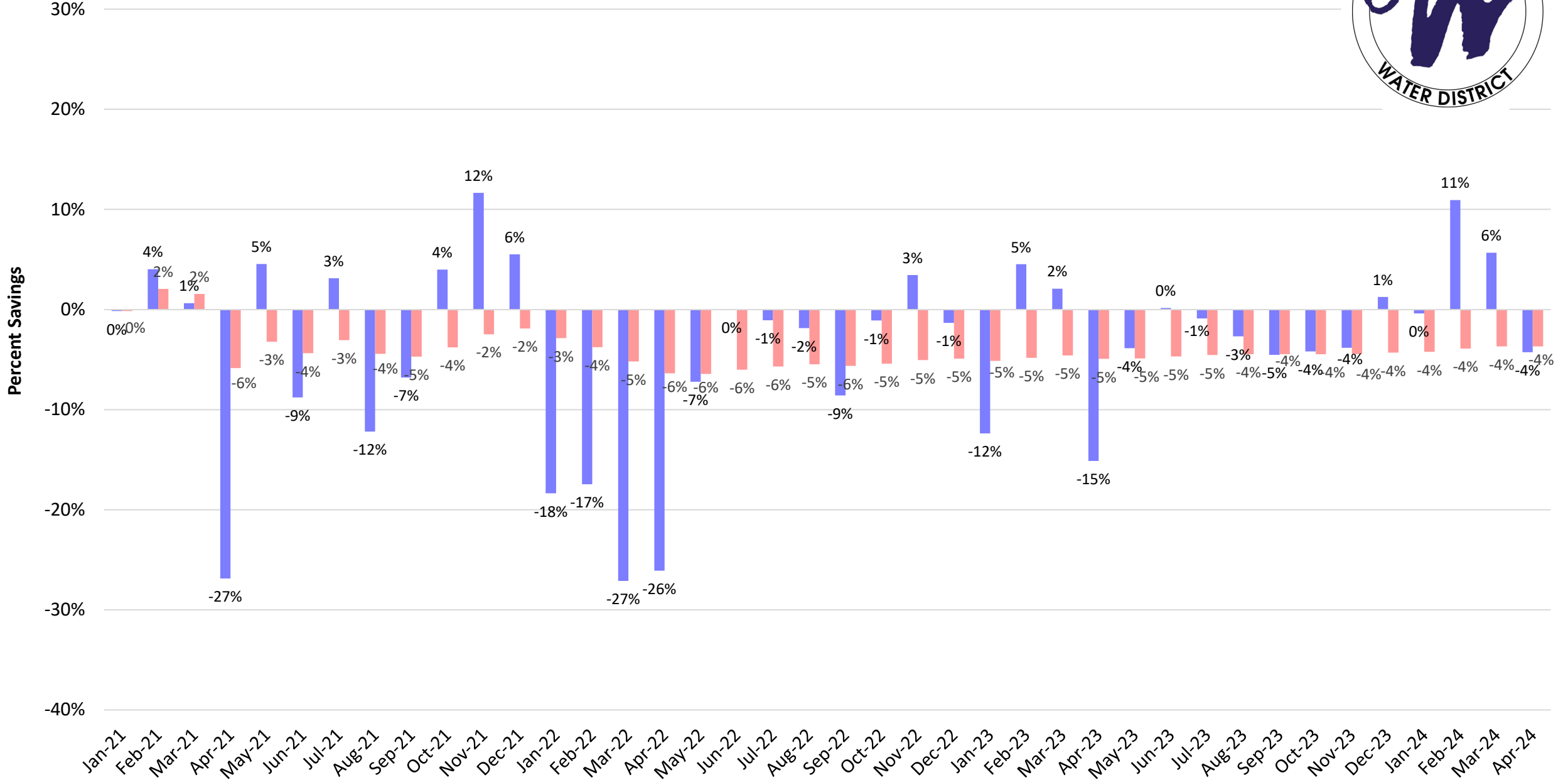
— 2013 Production
 — Stage 2 Goal - 20% below 2013 Baseline Production
 — 2023-24 Water Production



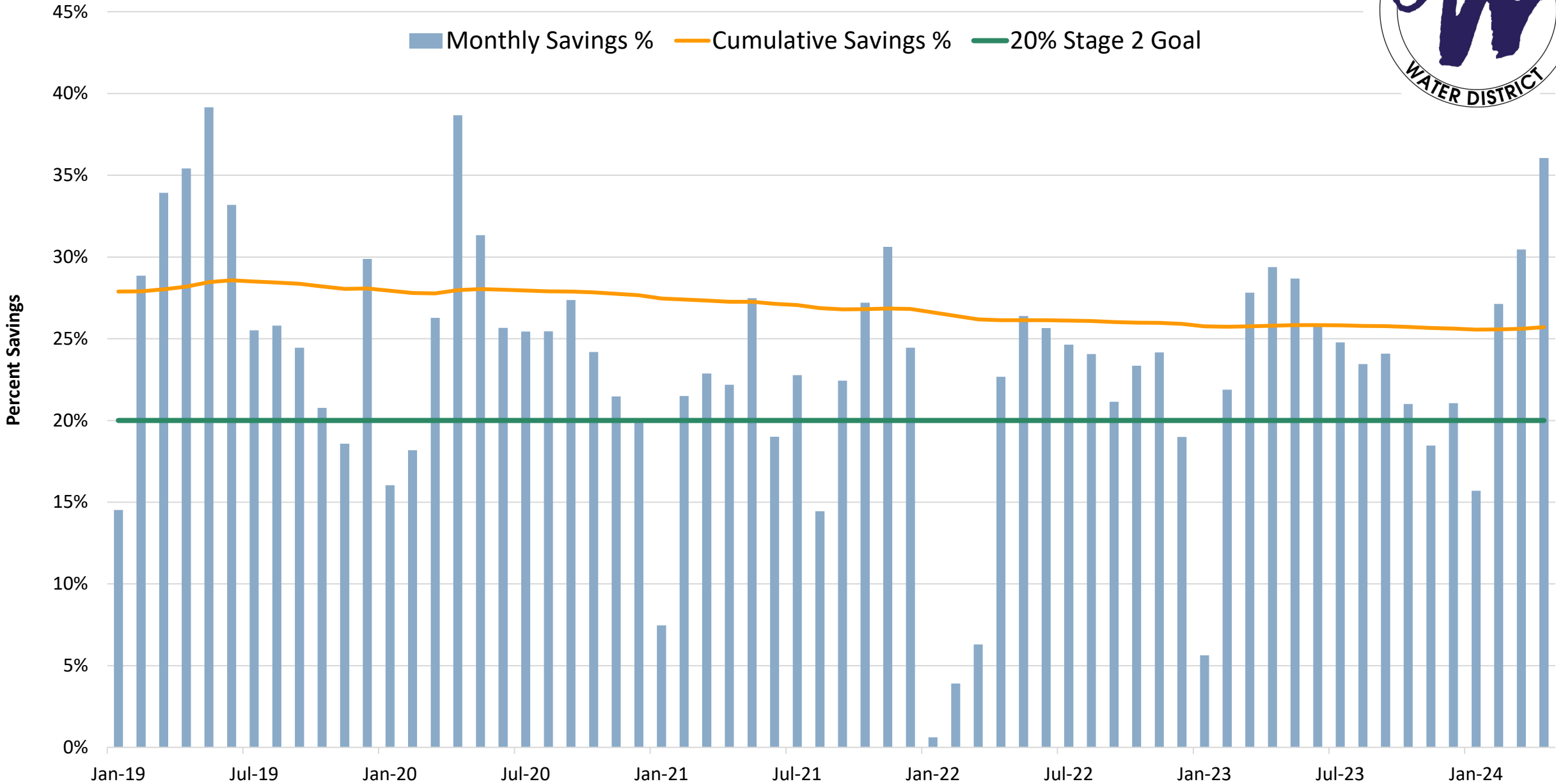
Monthly Well Production Savings and Cumulative Savings Compared to 2020



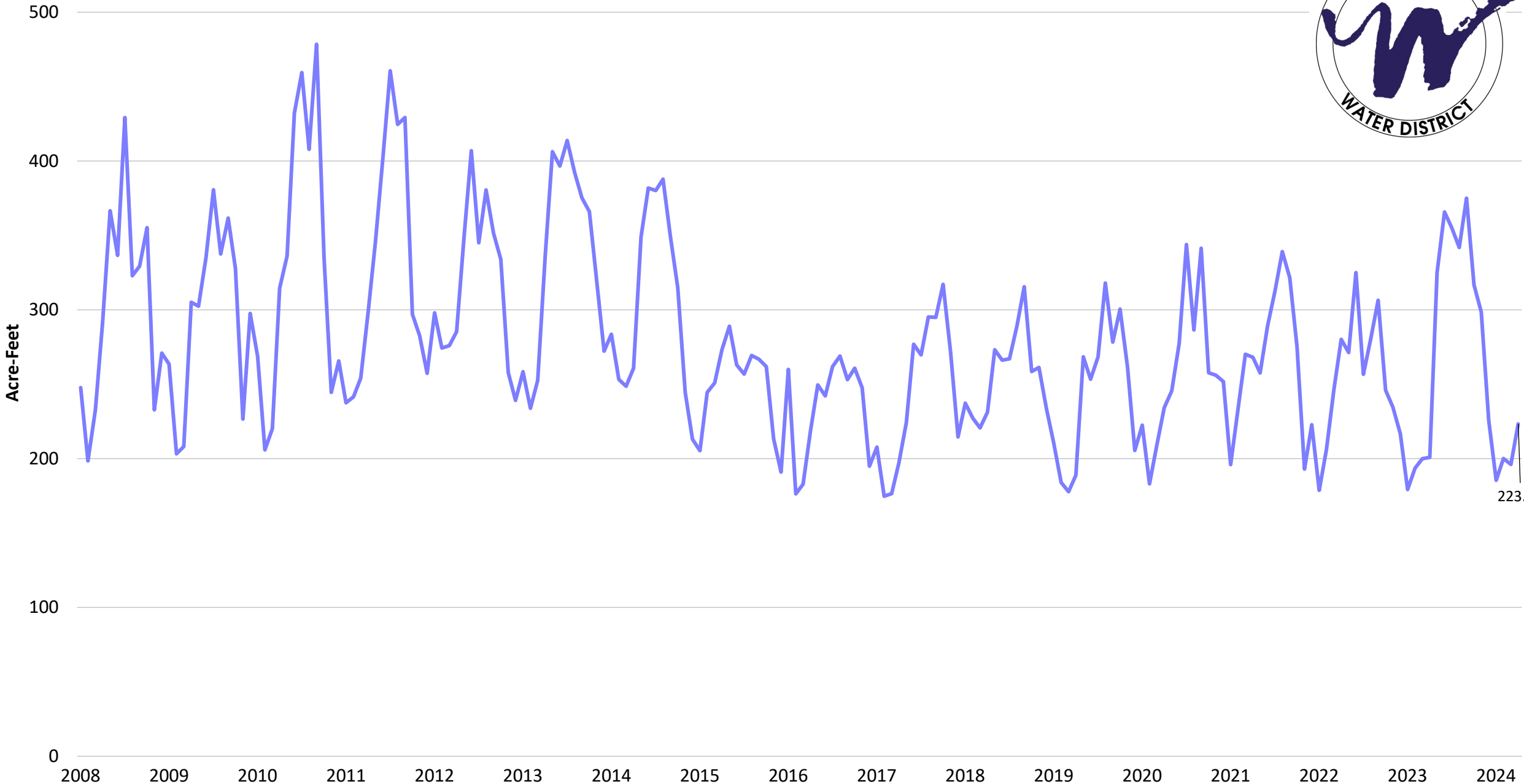
■ Monthly Savings % ■ Cumulative Savings %



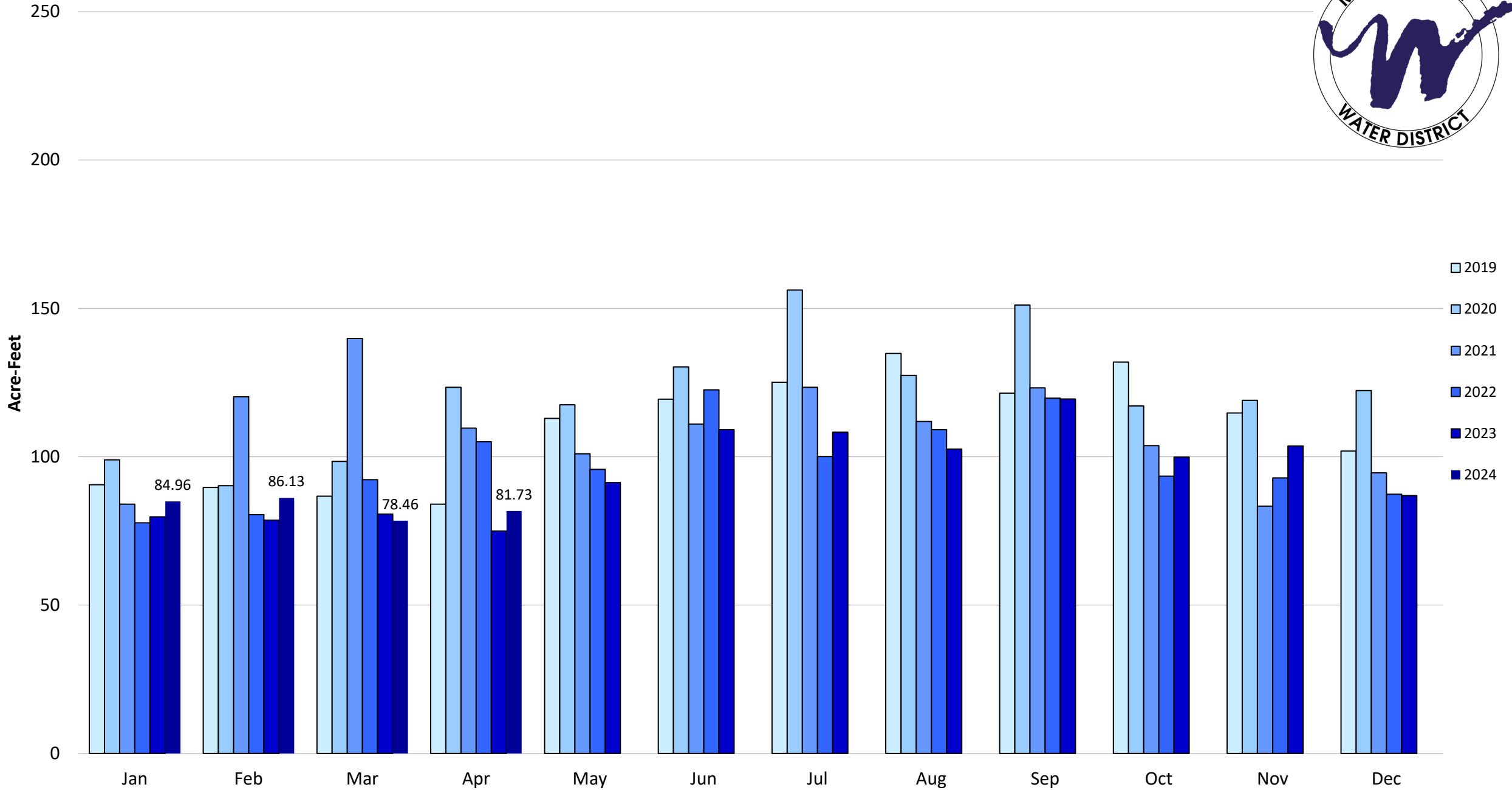
2019-2024 Monthly Well Production Savings and Cumulative Savings Compared to 2013



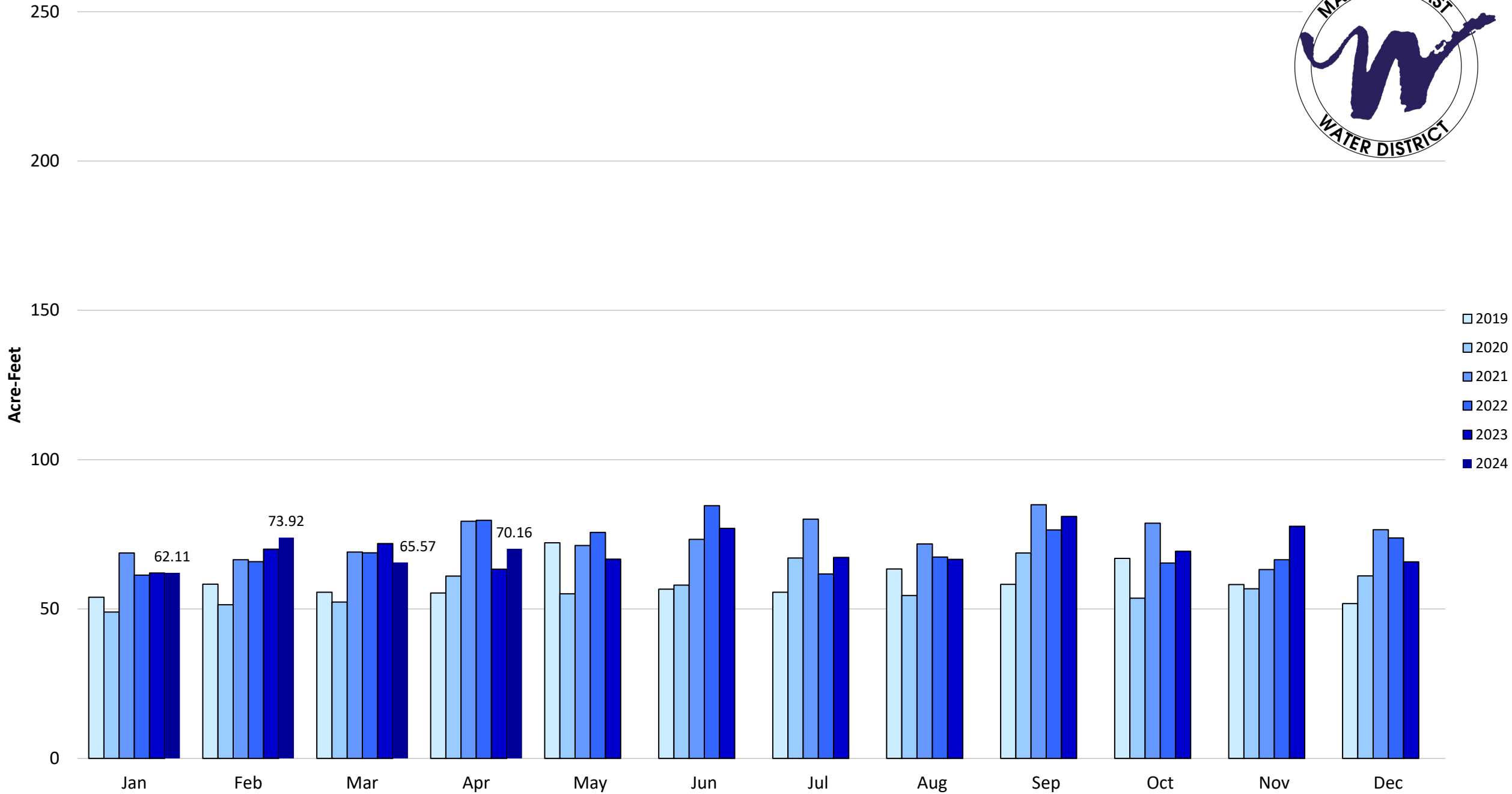
2008 - 2024 YTD Annual Total Water Consumption by Month



2019-2024 YTD Single Family Consumption by Month

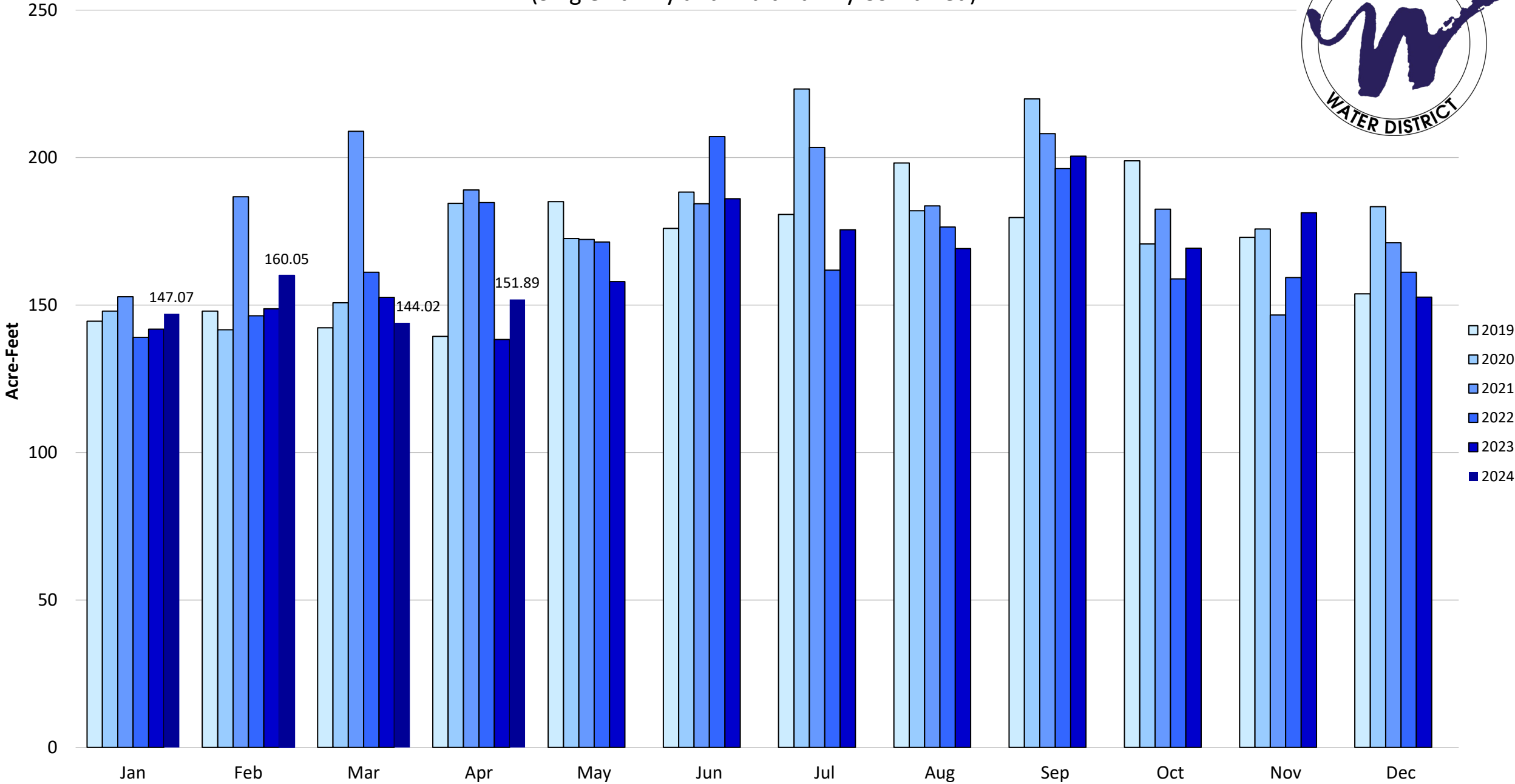


2019-2024 YTD Multi-Family Consumption by Month



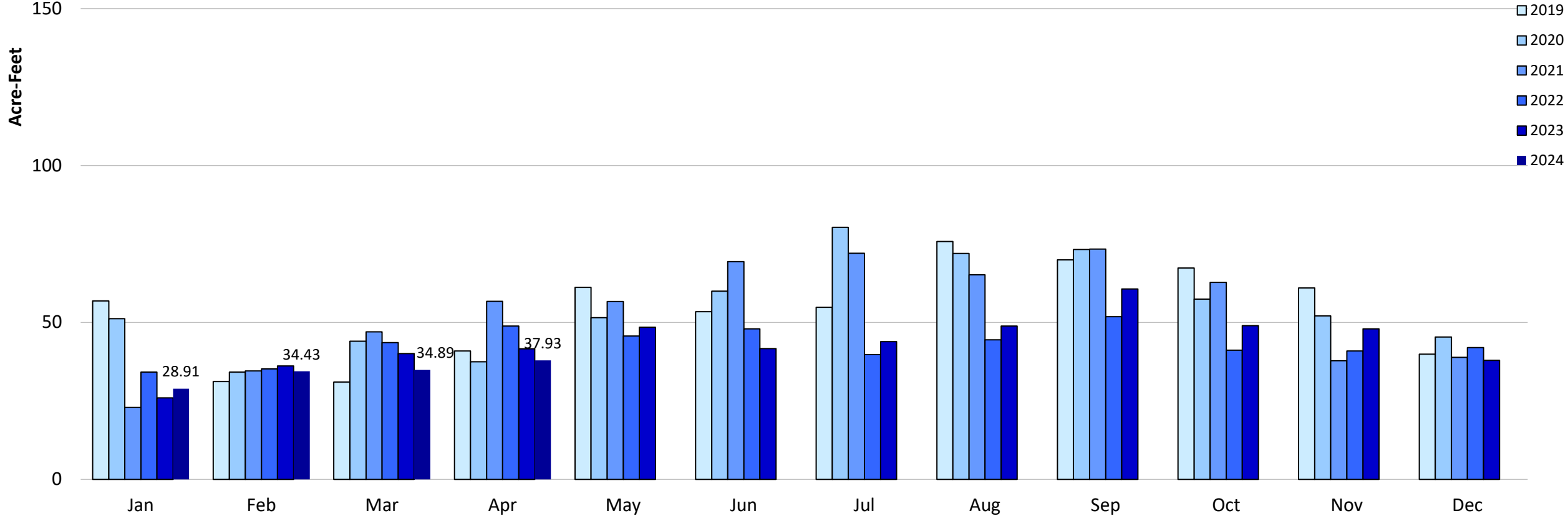
2019-2024 YTD Residential Total Consumption by Month

(Single-Family and Multi-family Combined)

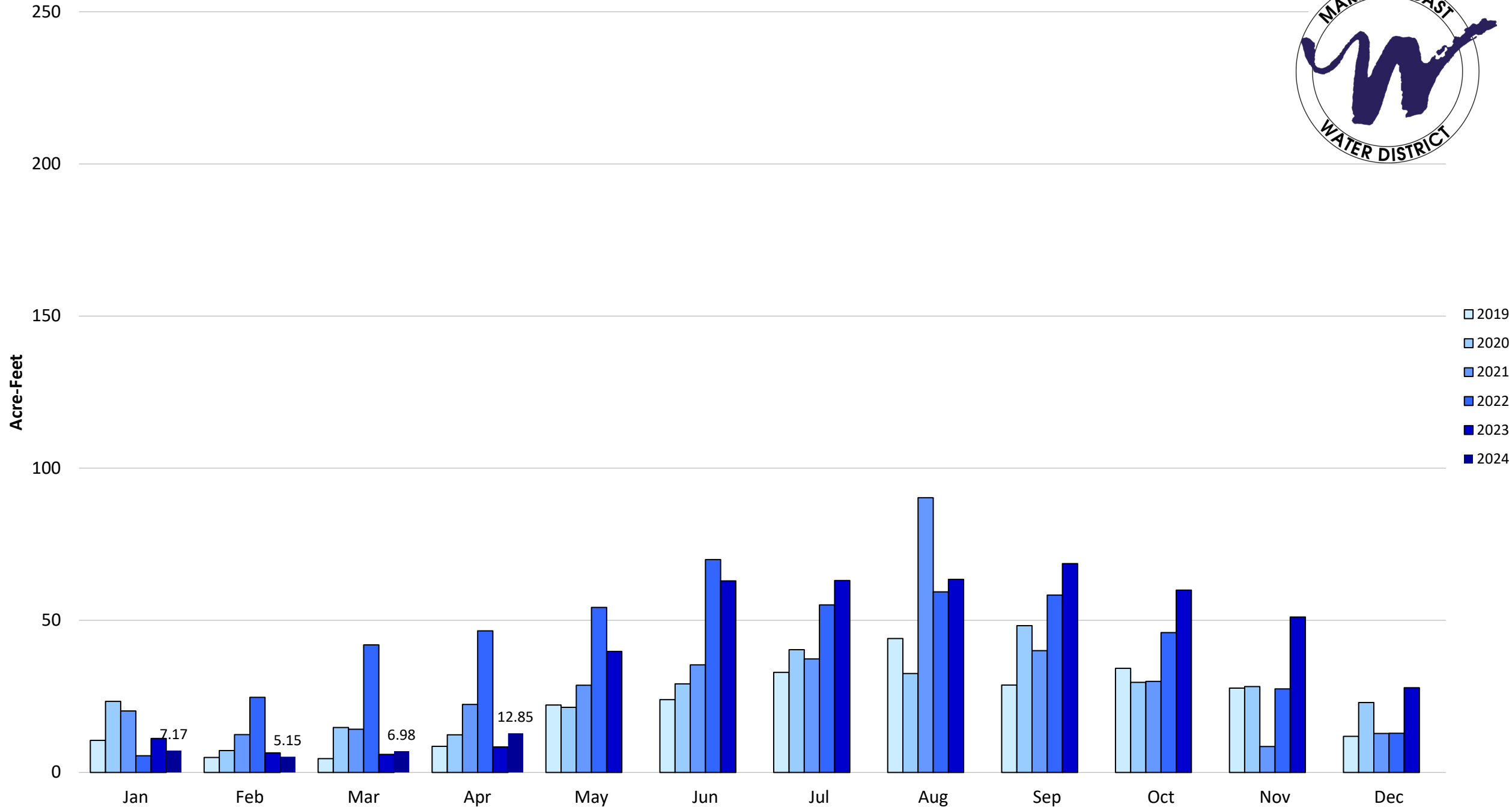


2019-2024 YTD CII Consumption

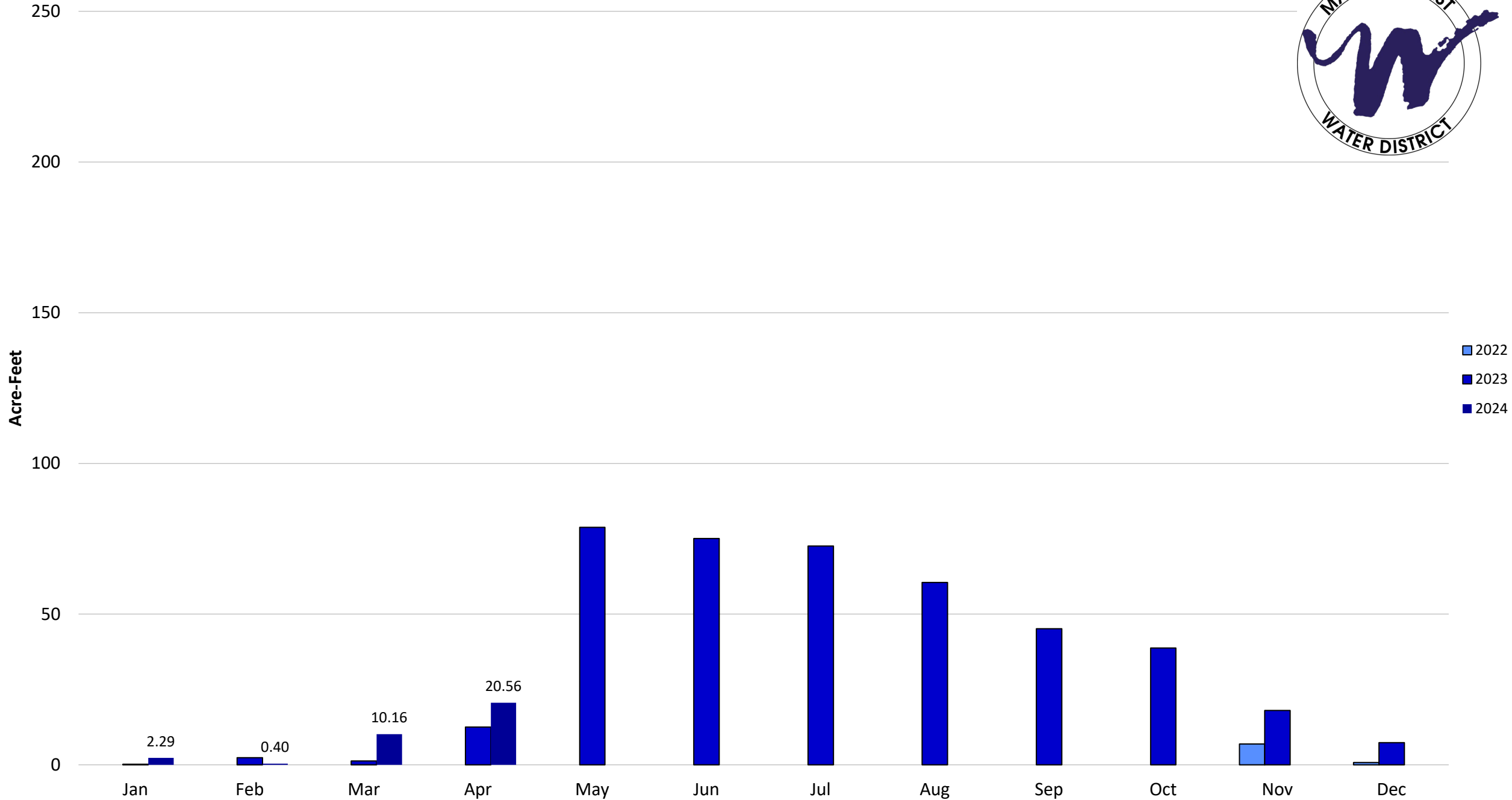
(Commercial/Institutional/Industrial)



2019-2024 YTD Potable Landscape Irrigation Consumption by Month

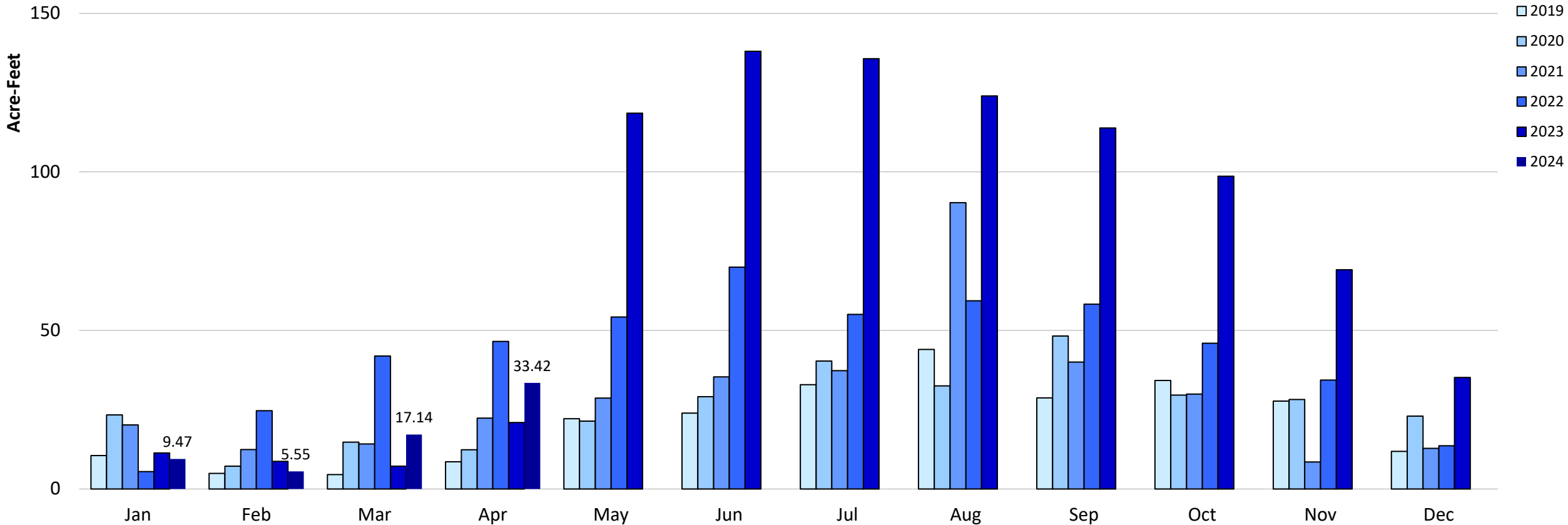


2022-2024 YTD Recycled Landscape Irrigation Consumption by Month

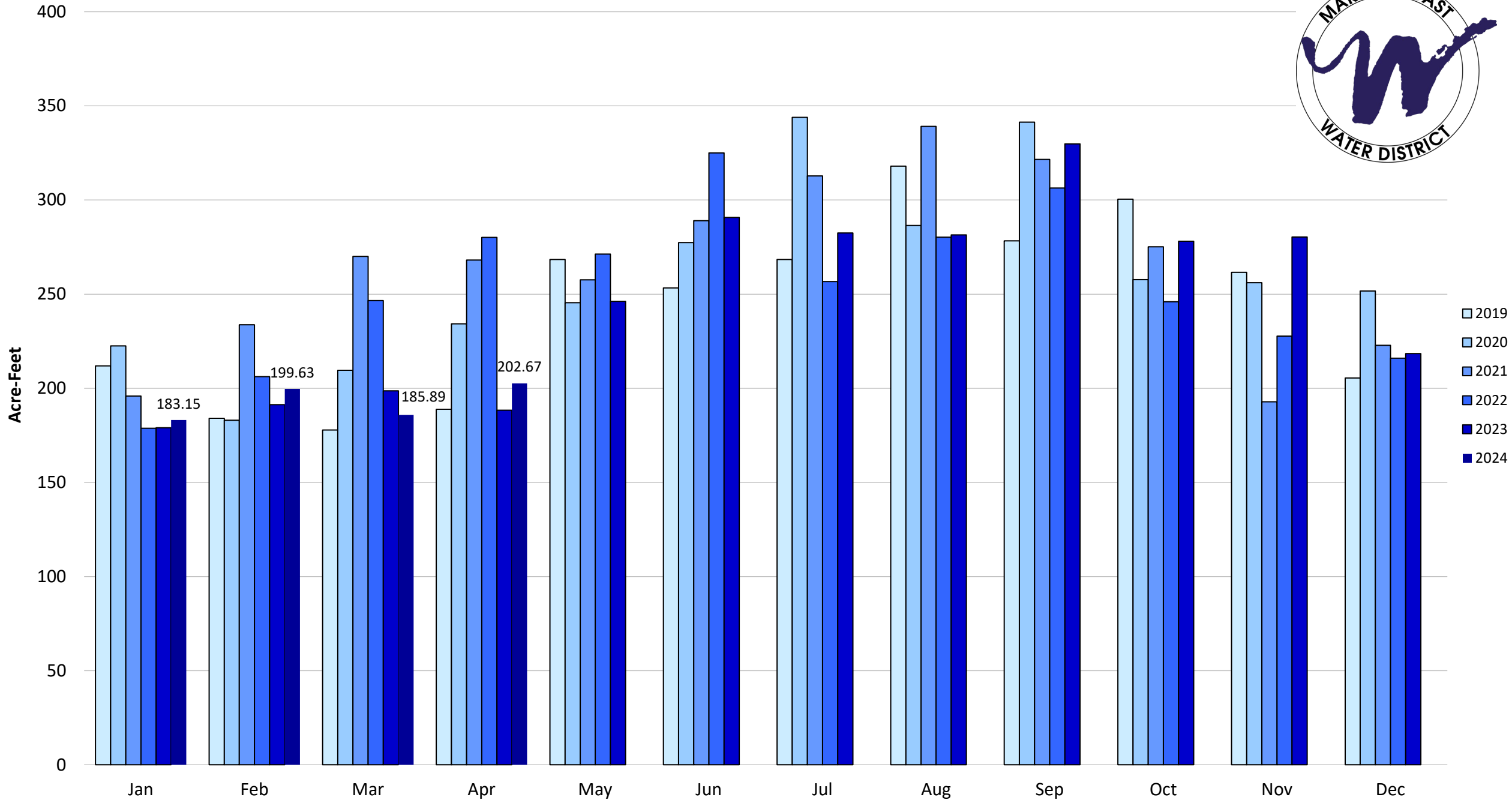


2019-2024 Total Landscape Irrigation Consumption by Month

(Potable and Recycled Water combined)

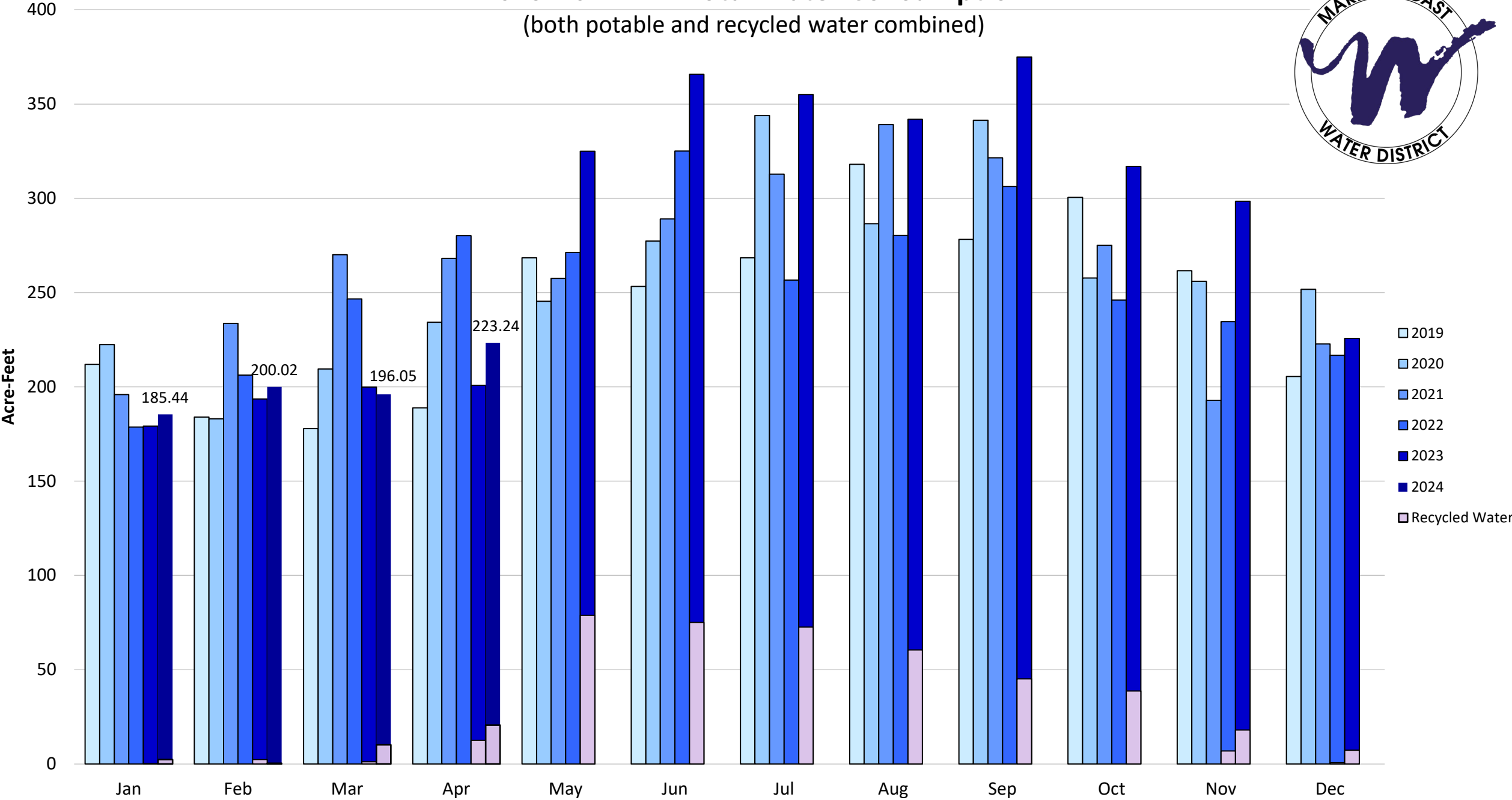


2019-2024 YTD Total Potable Water Consumption

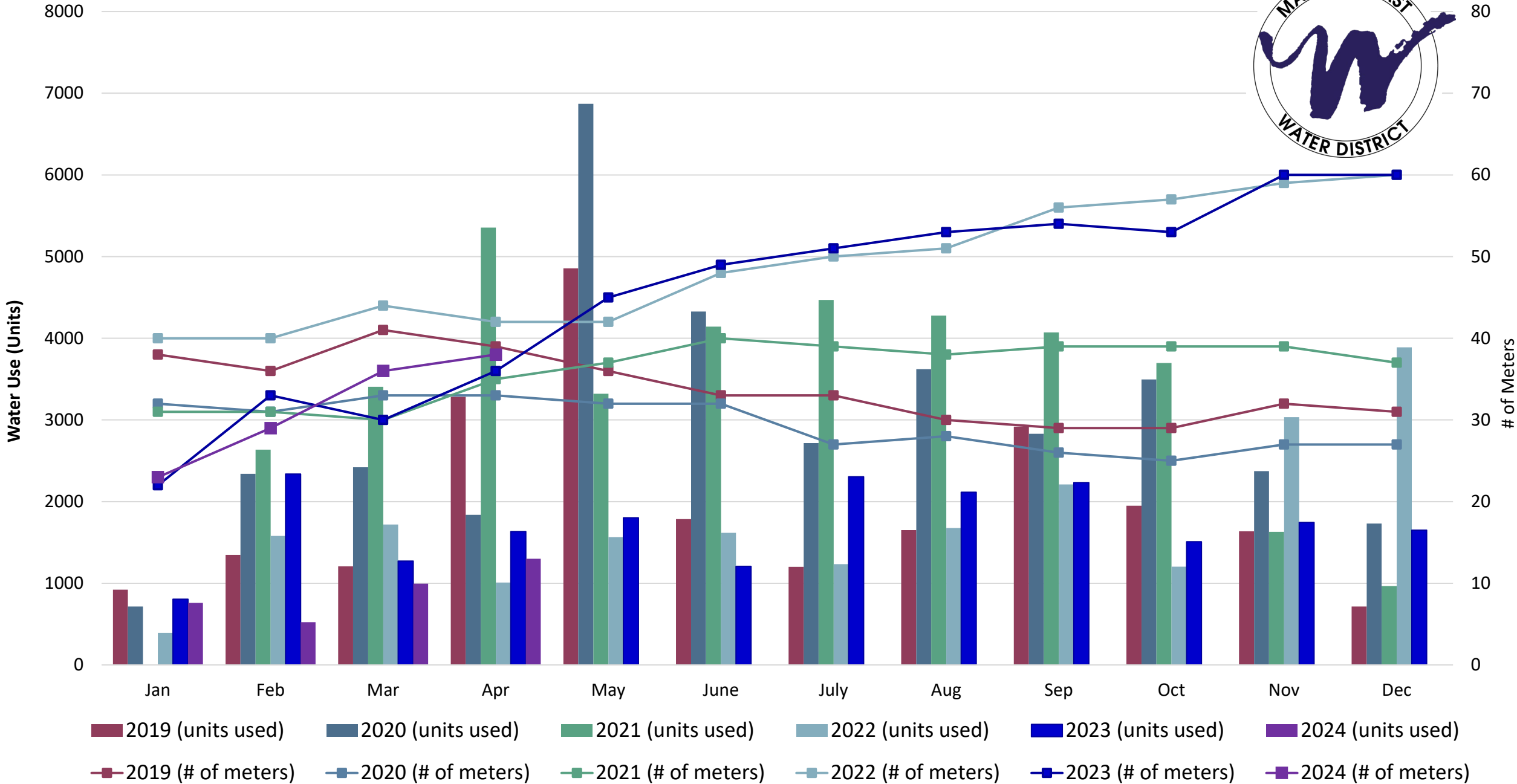


2019-2024 YTD Total Water Consumption

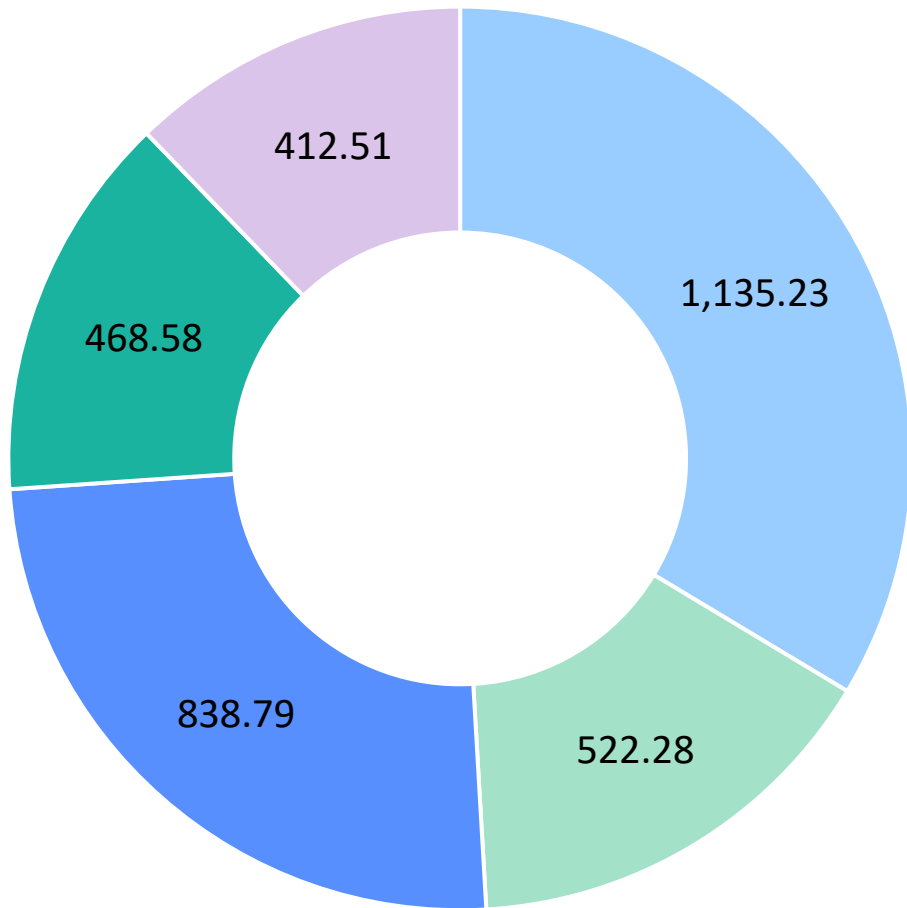
(both potable and recycled water combined)



2019-2024 YTD Temporary Hydrant Meter Consumption and Meter Count

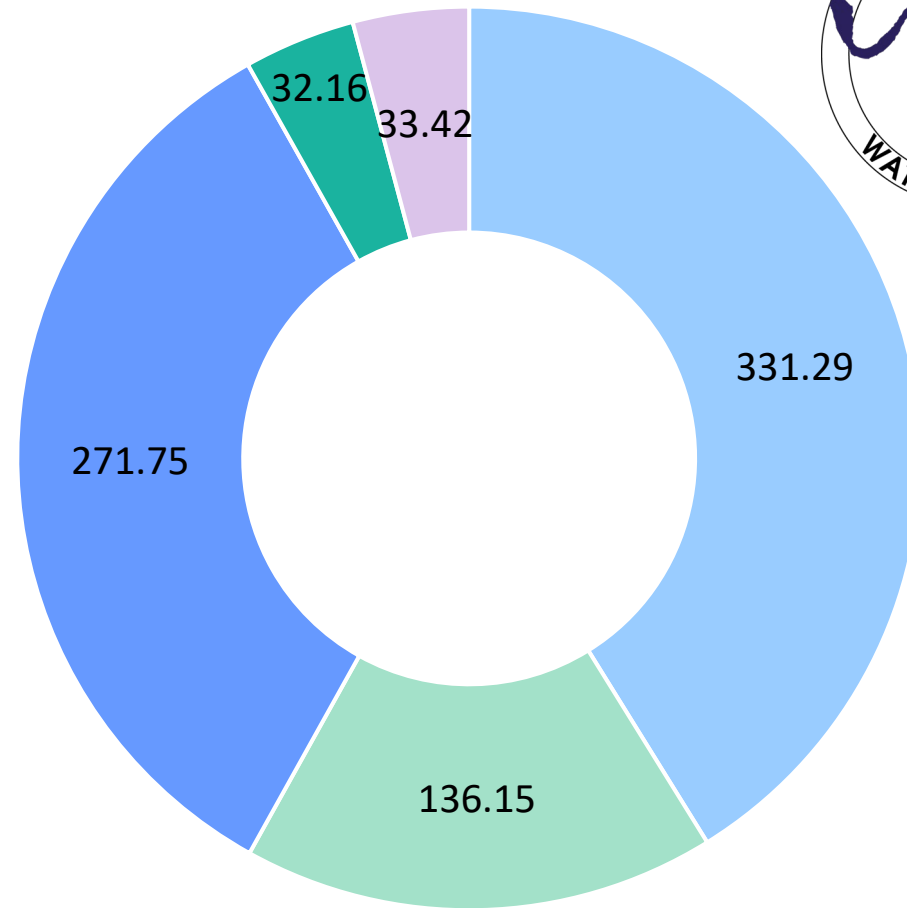


2023 Year Total Consumption (3377.39 AF)



- Single Family = 33.6%
- Commercial/Institutional/Industrial = 15.5%
- Multi-Family = 24.8%
- Dedicated Landscape Irrigation (Potable Water) = 13.9%
- Recycled Water = 12.2%

April 2024 YTD Consumption (804.76 AF)

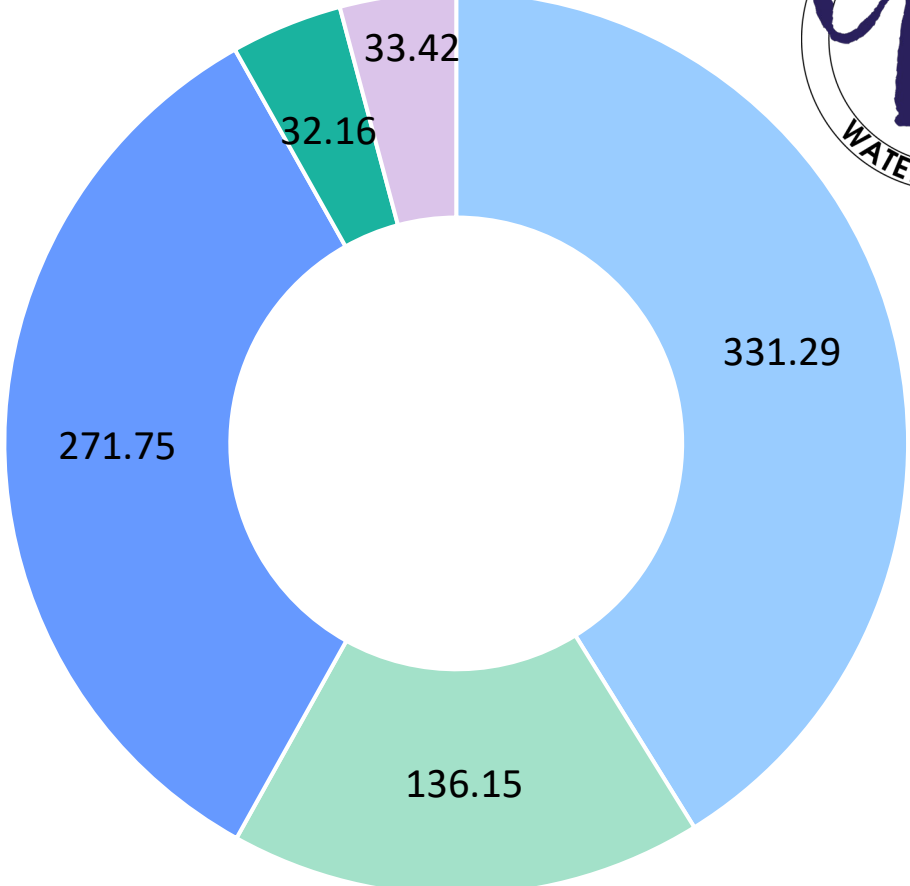
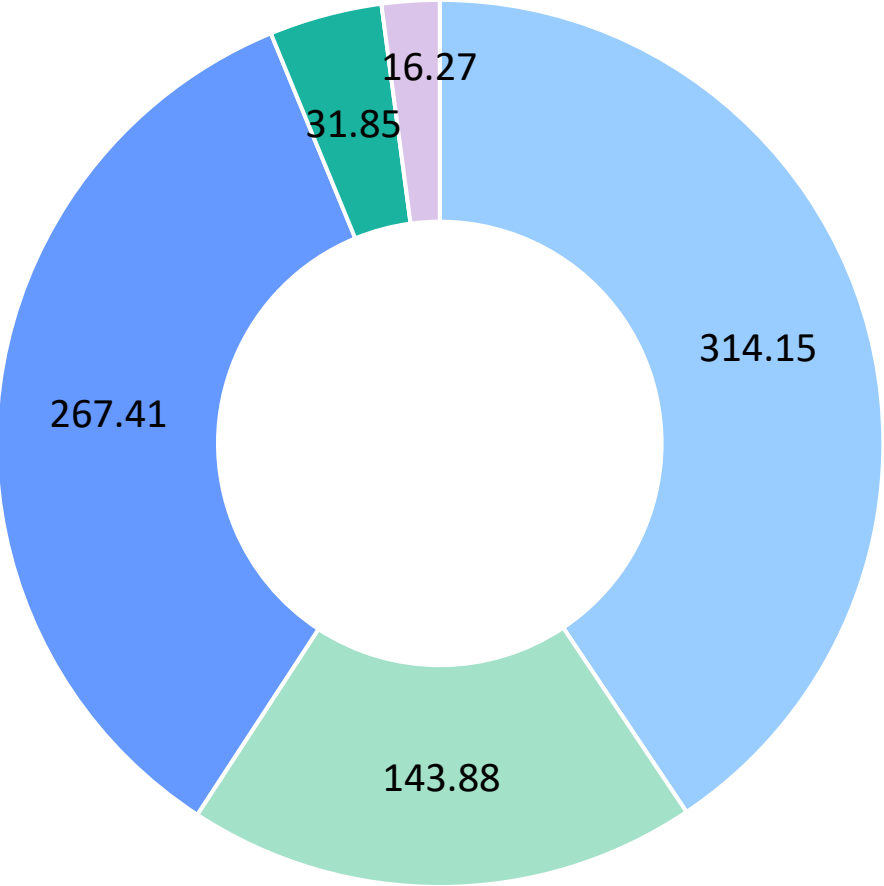


- Single Family = 41.2%
- Commercial/Institutional/Industrial = 16.9%
- Multi-Family = 33.8%
- Dedicated Landscape Irrigation (Potable Water) = 4.0%
- Recycled Water = 4.2%



April 2023 YTD Consumption (773.56 AF)

April 2024 YTD Consumption (804.76 AF)



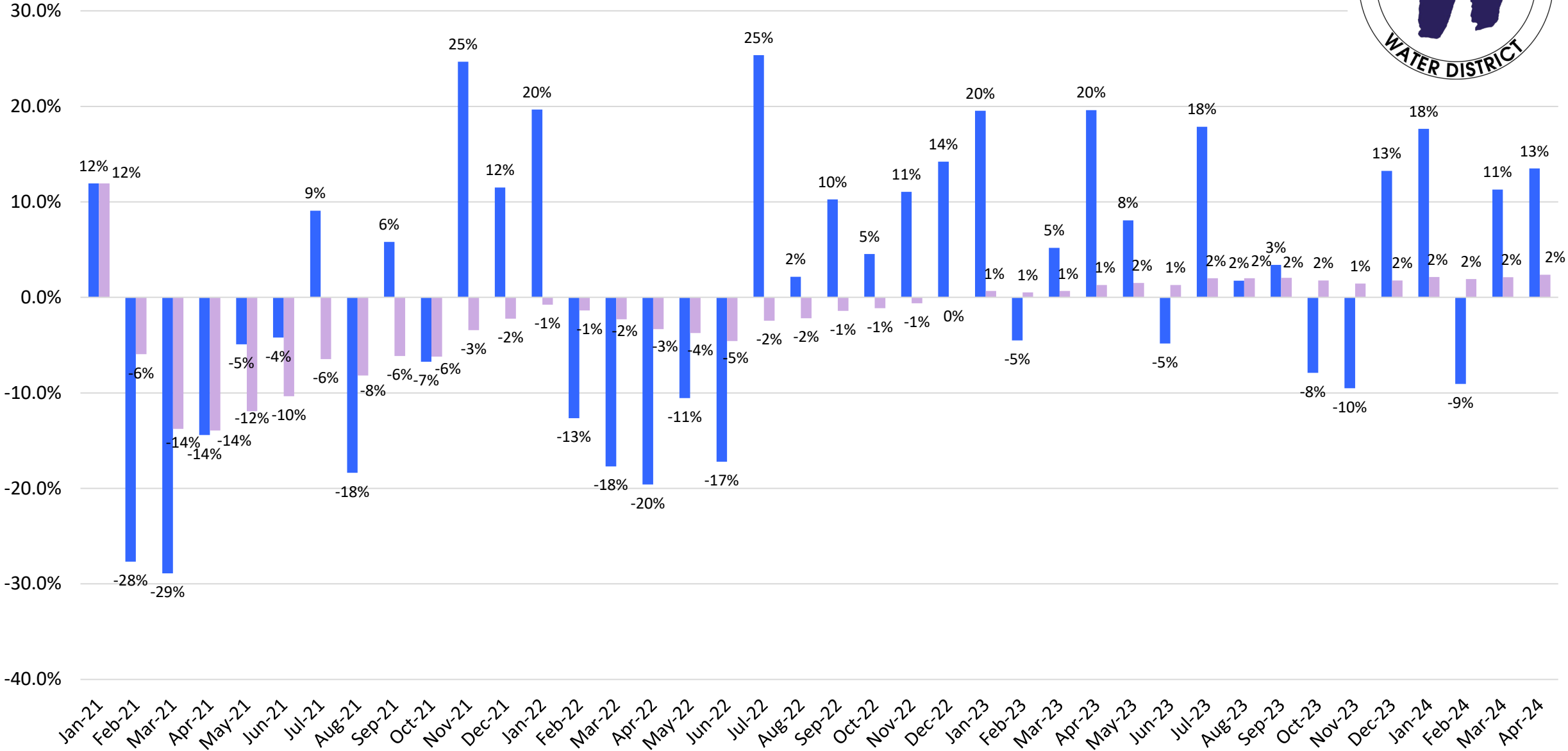
- Single Family = 40.6%
- Commercial/Institutional/Industrial = 18.6%
- Multi-Family = 34.6%
- Dedicated Landscape Irrigation (Potable Water) = 4.1%
- Recycled Water = 2.1%

- Single Family = 41.2%
- Commercial/Institutional/Industrial = 16.9%
- Multi-Family = 33.8%
- Dedicated Landscape Irrigation (Potable Water) = 4.0%
- Recycled Water = 4.2%

Monthly Potable Water Consumption Savings and Cumulative Savings Compared to 2020

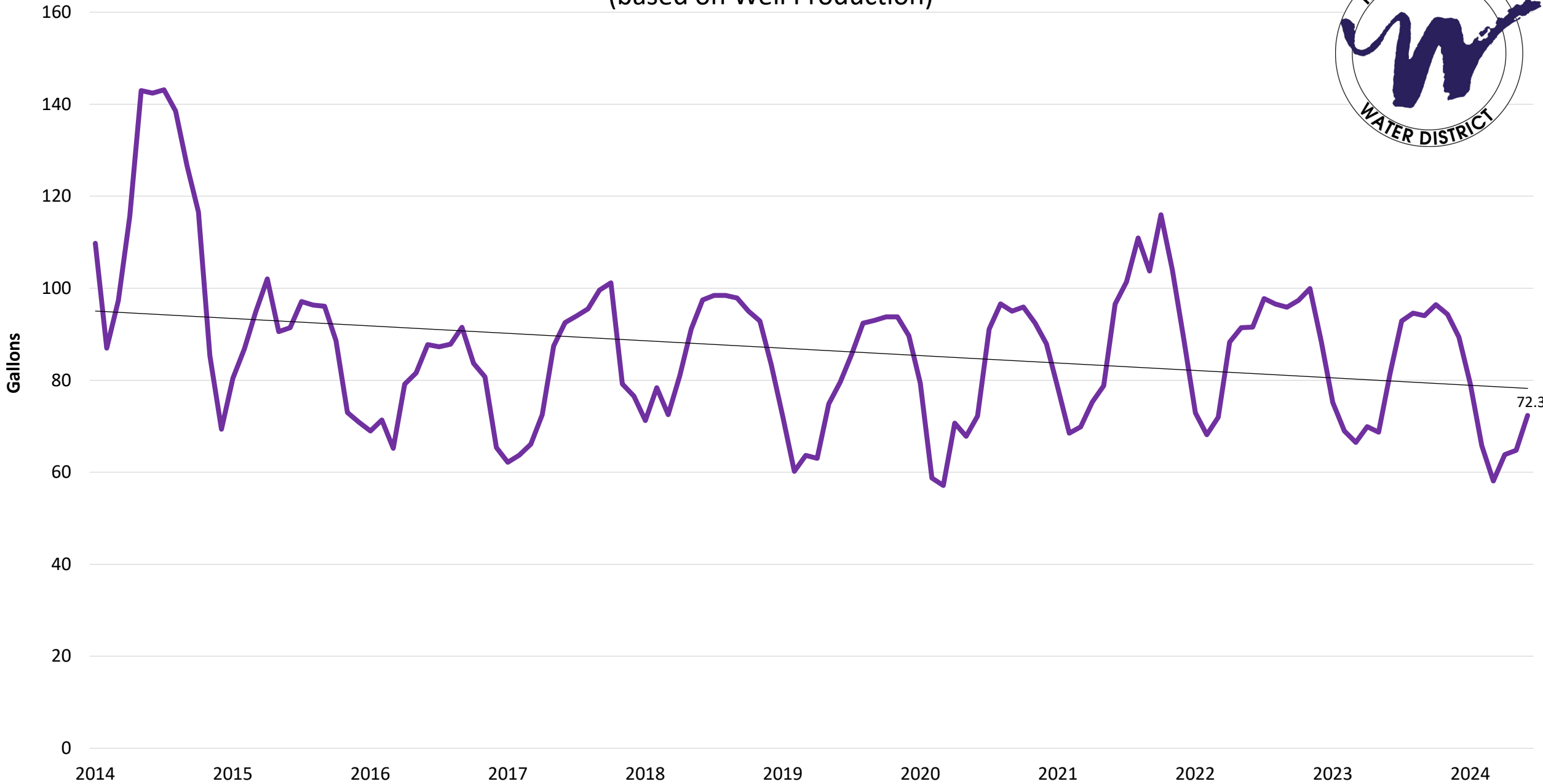


■ Monthly Savings % ■ Cumulative Savings %

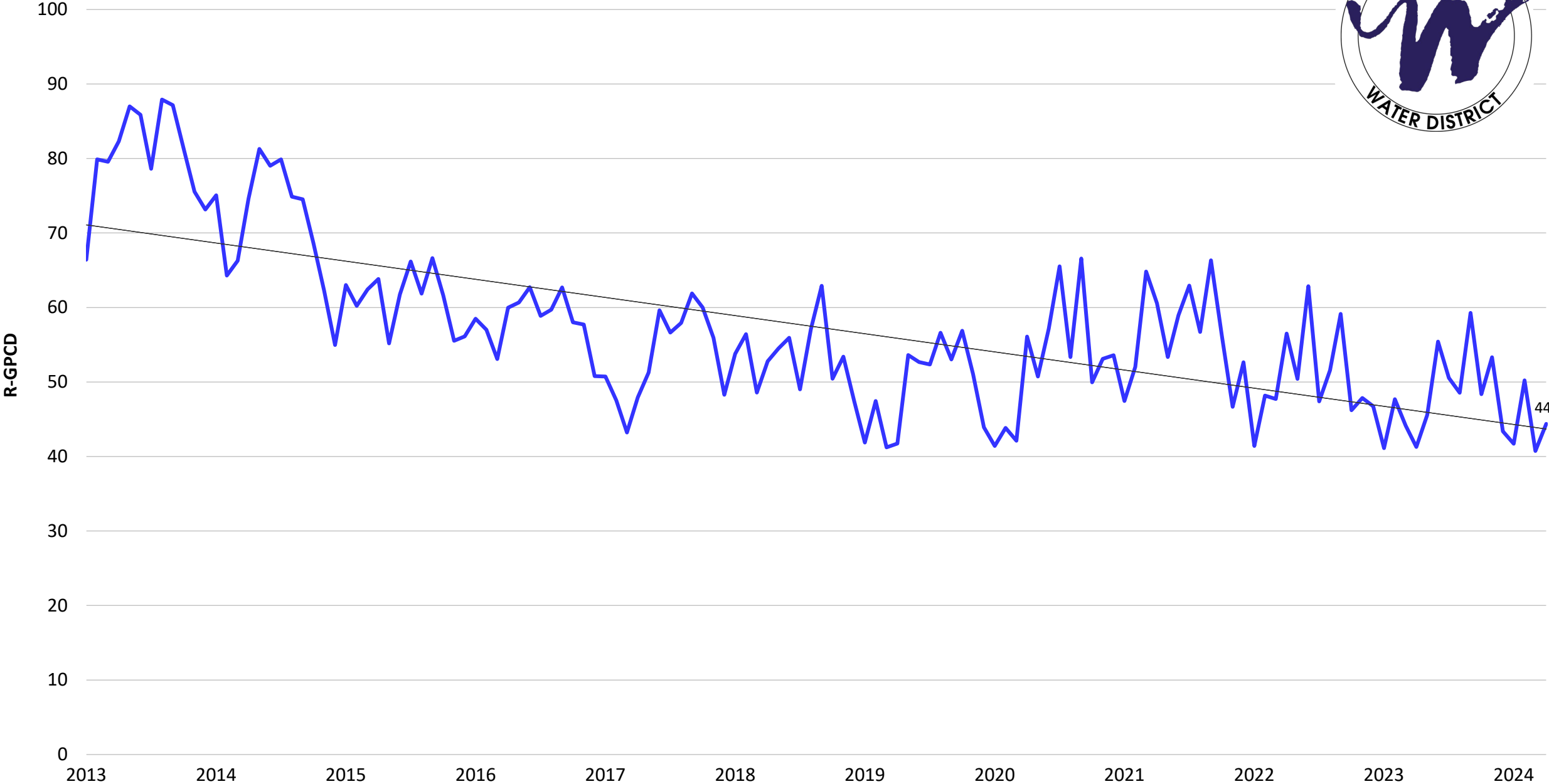


2014-2024 Monthly Gallons Per Capita Day (GPCD)

(based on Well Production)



2013-2024 Monthly Residential Gallons per Capita Day (R-GPCD)



2013-2024 Monthly R-GPCD vs. GPCD



R-GPCD GPCD

