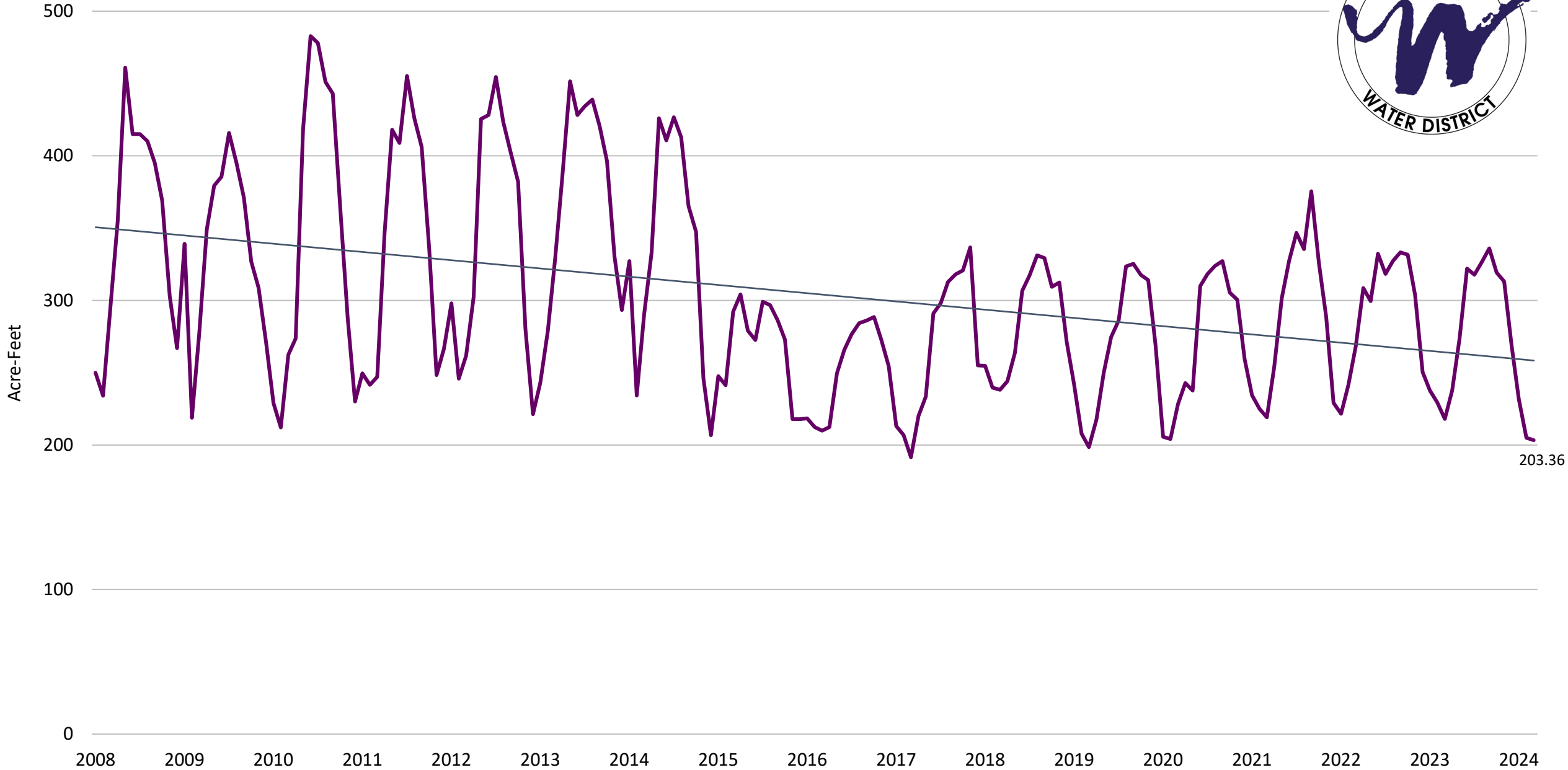


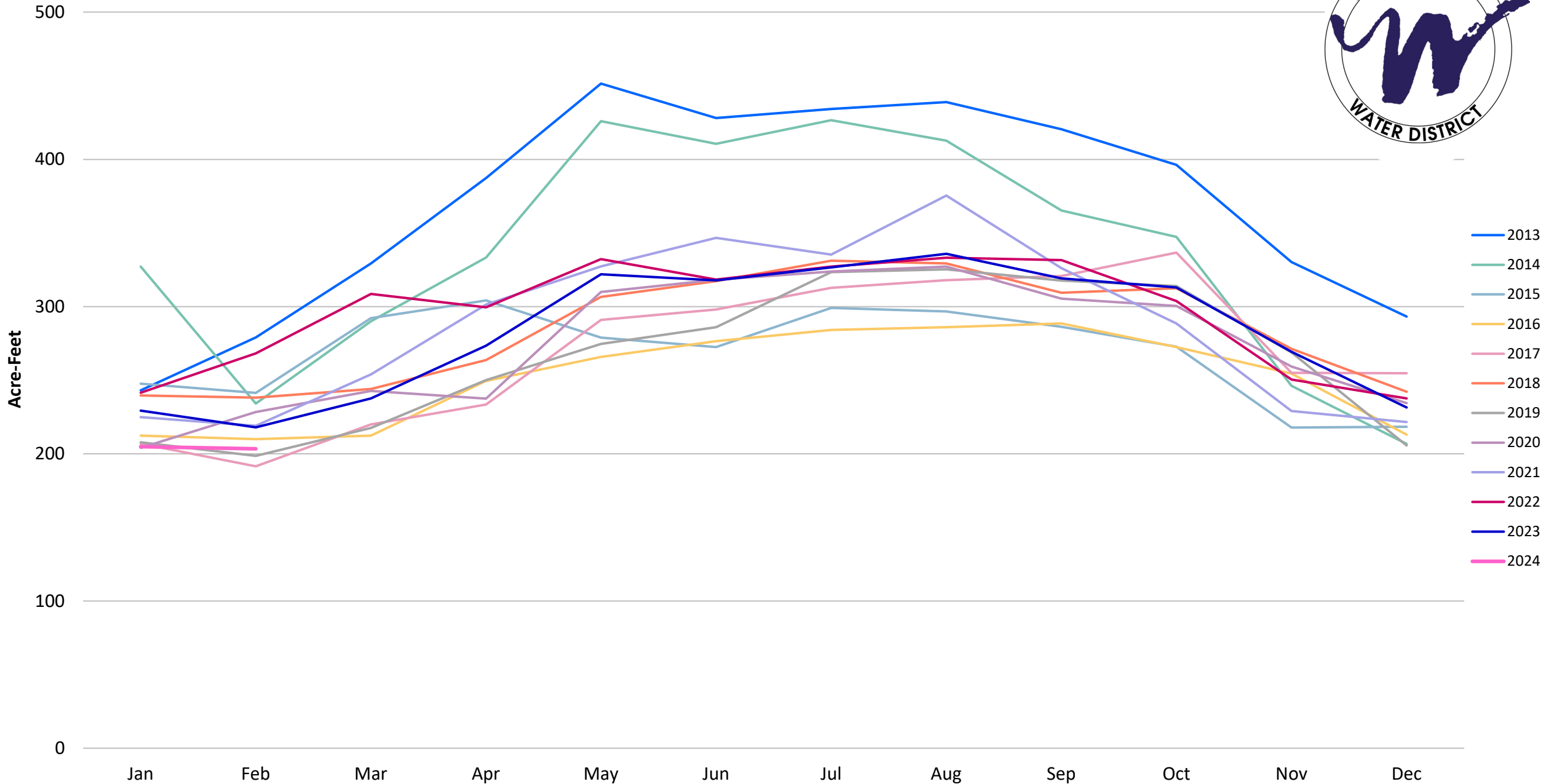
February 2024 Water Production & Consumption



2008-2024 YTD Total Well Production by Month



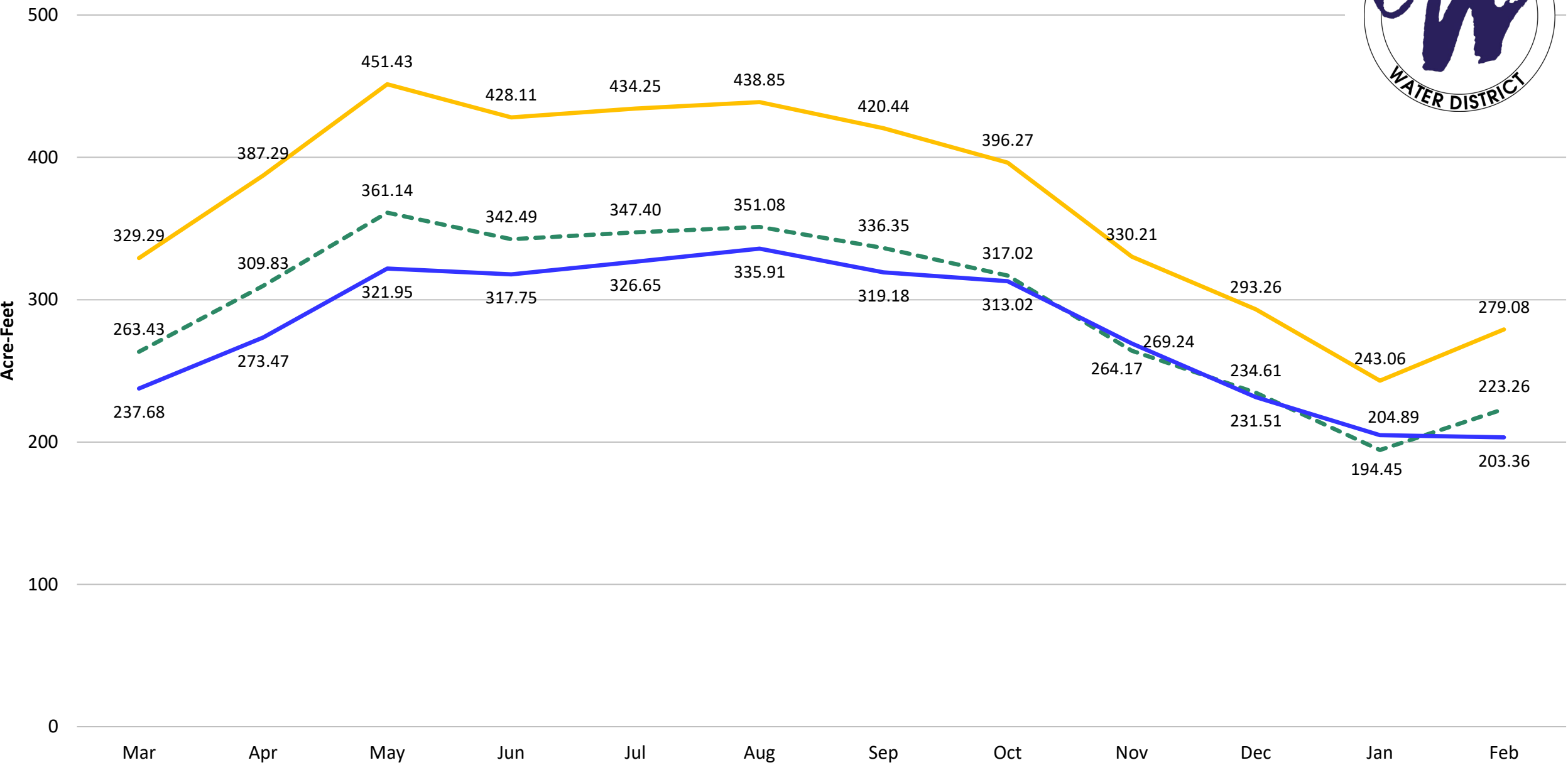
2013-2024 YTD Total Well Production by Month



2023-2024 YTD Production vs. Water Production Reduction Goals



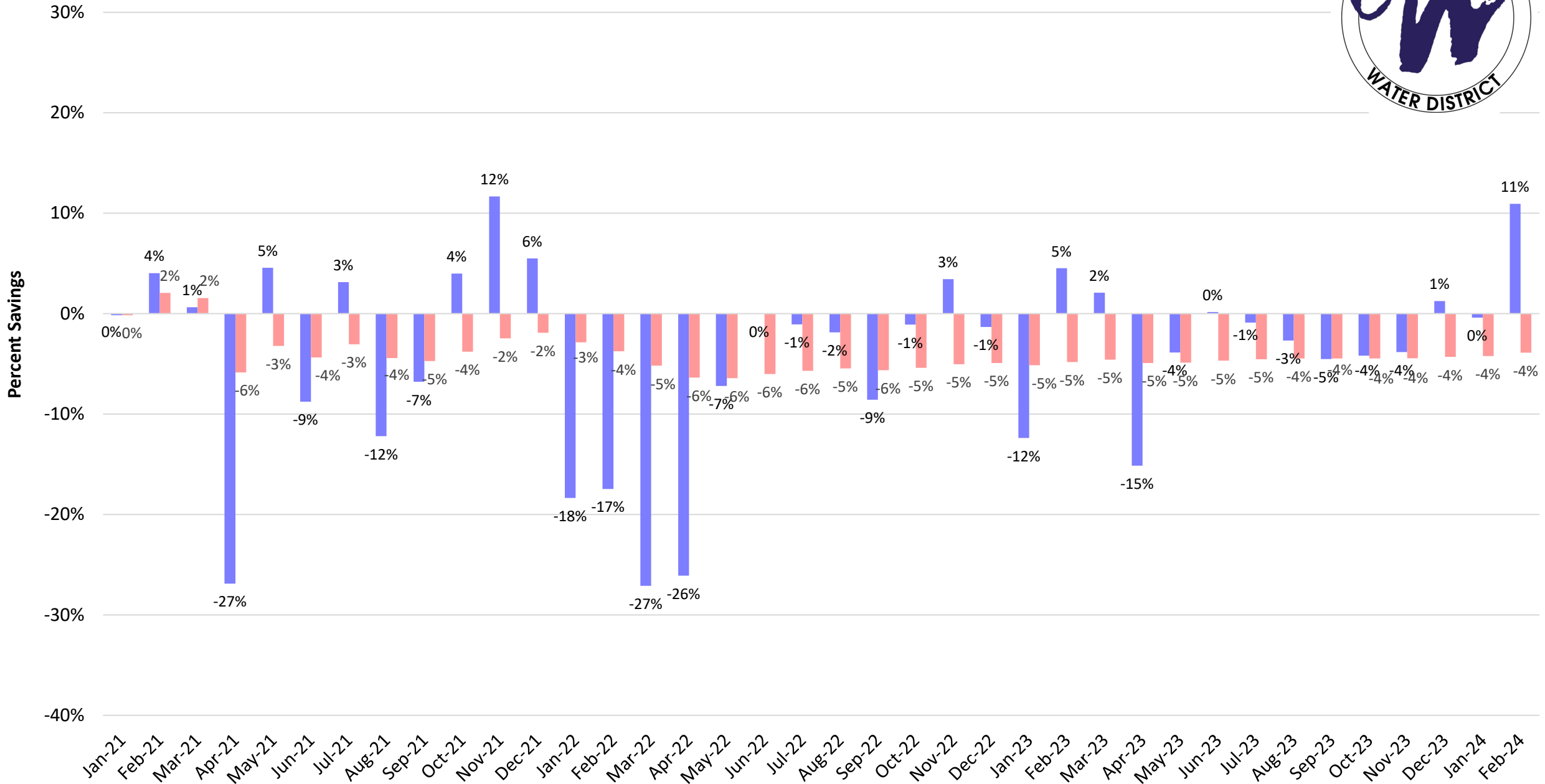
— 2013 Production
 — Stage 2 Goal - 20% below 2013 Baseline Production
 — 2023-24 Water Production



Monthly Well Production Savings and Cumulative Savings Compared to 2020

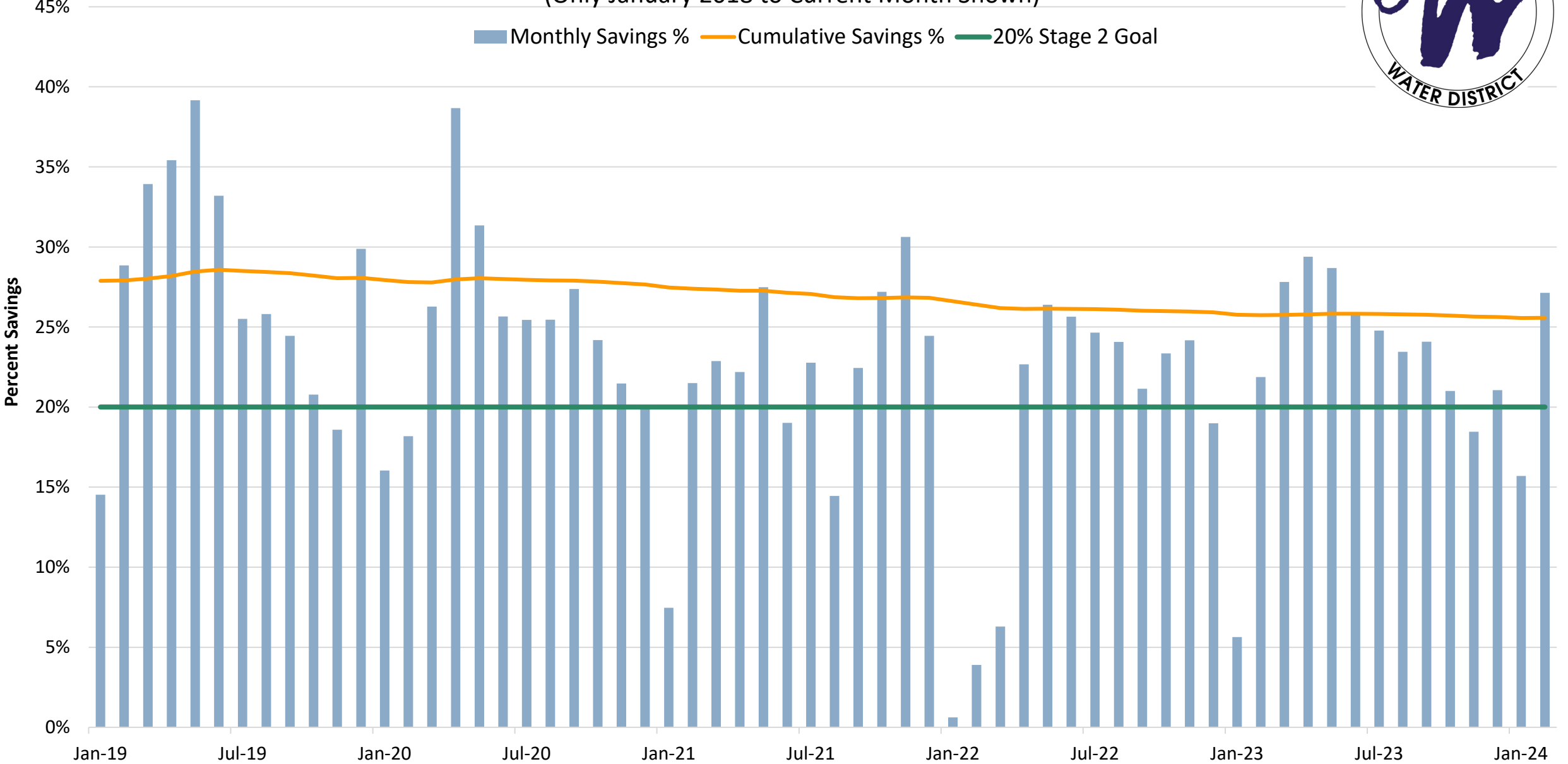


■ Monthly Savings % ■ Cumulative Savings %

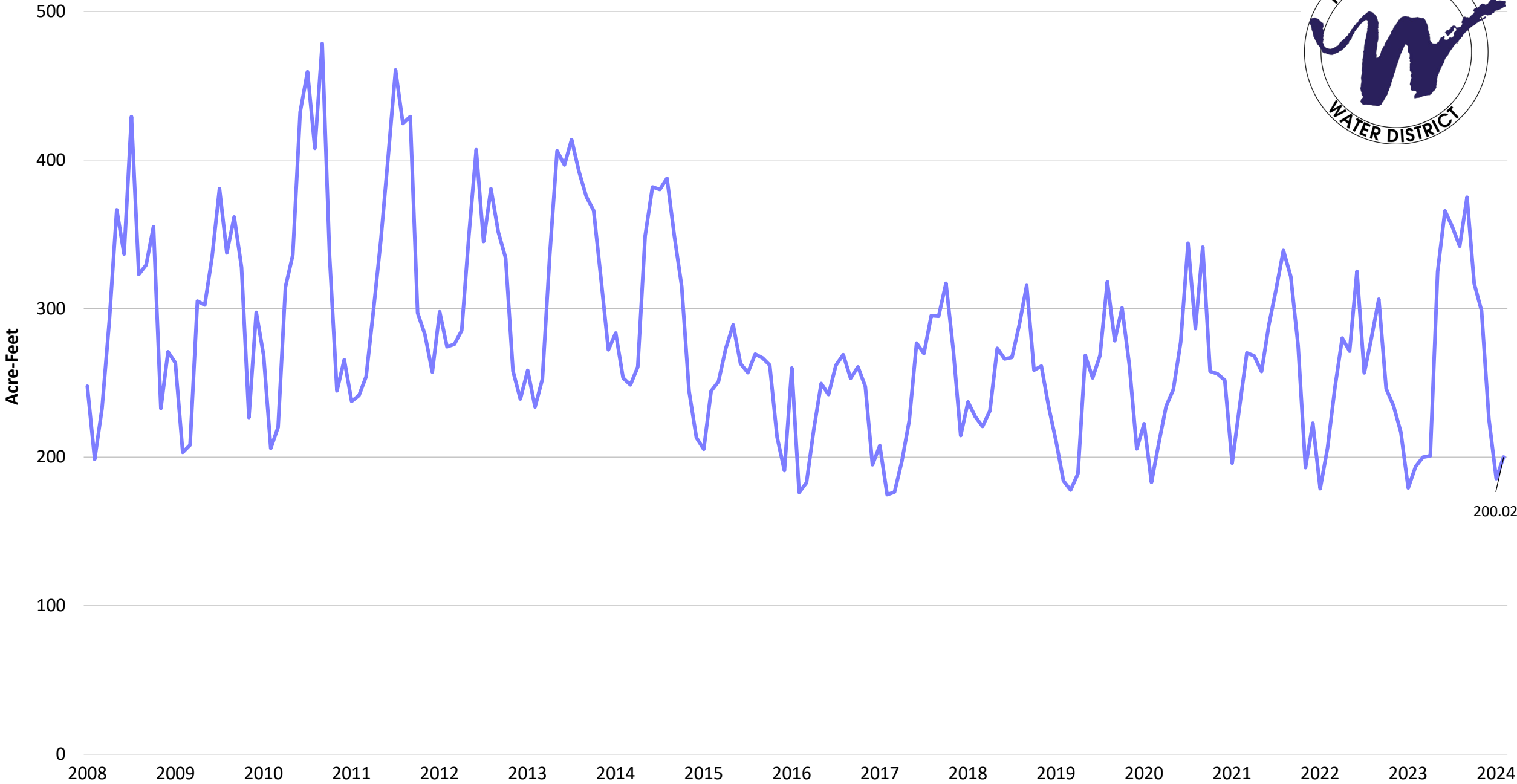


2019-2024 YTD Monthly Well Production Savings and Cumulative Savings Compared to 2013

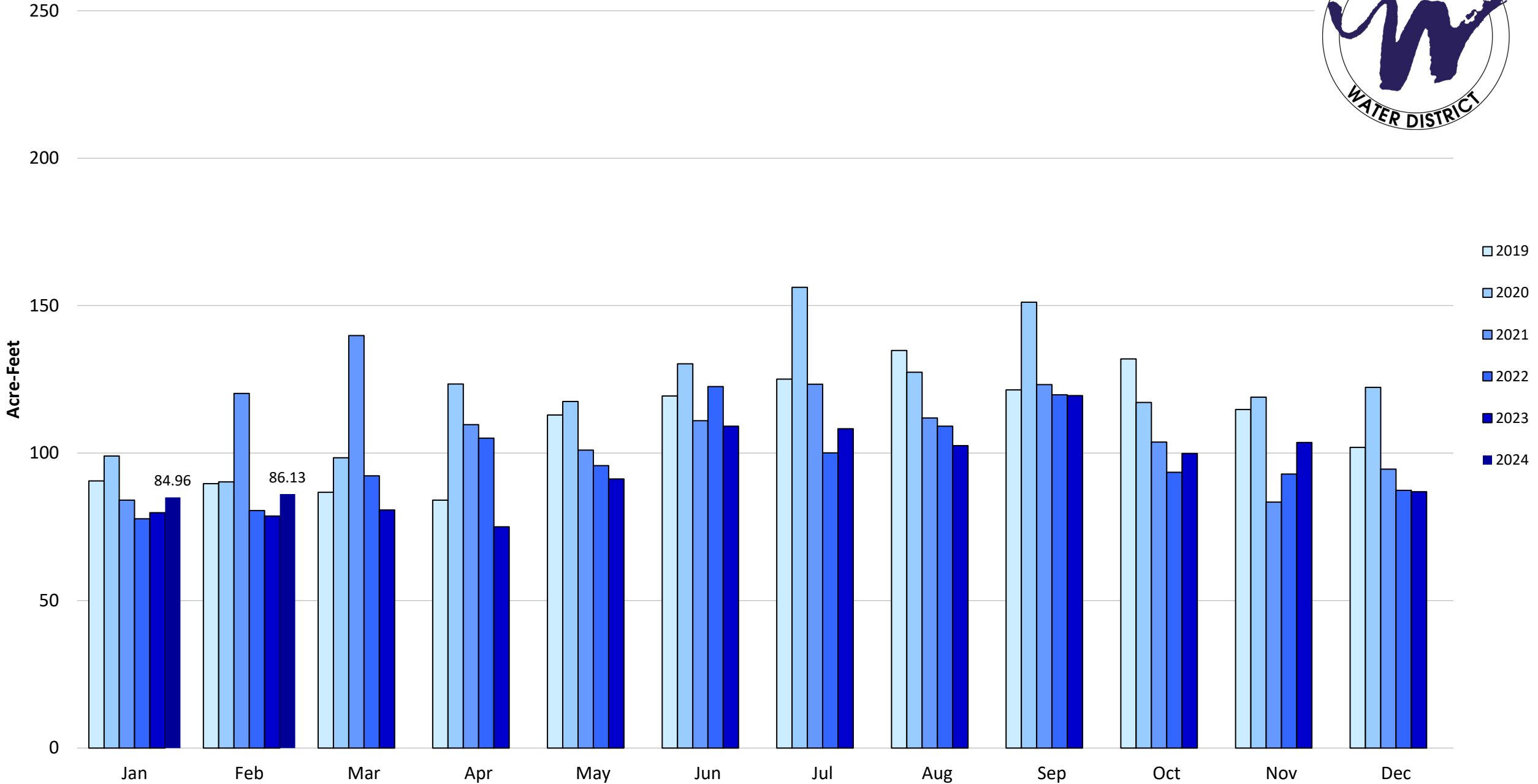
(Only January 2018 to Current Month Shown)



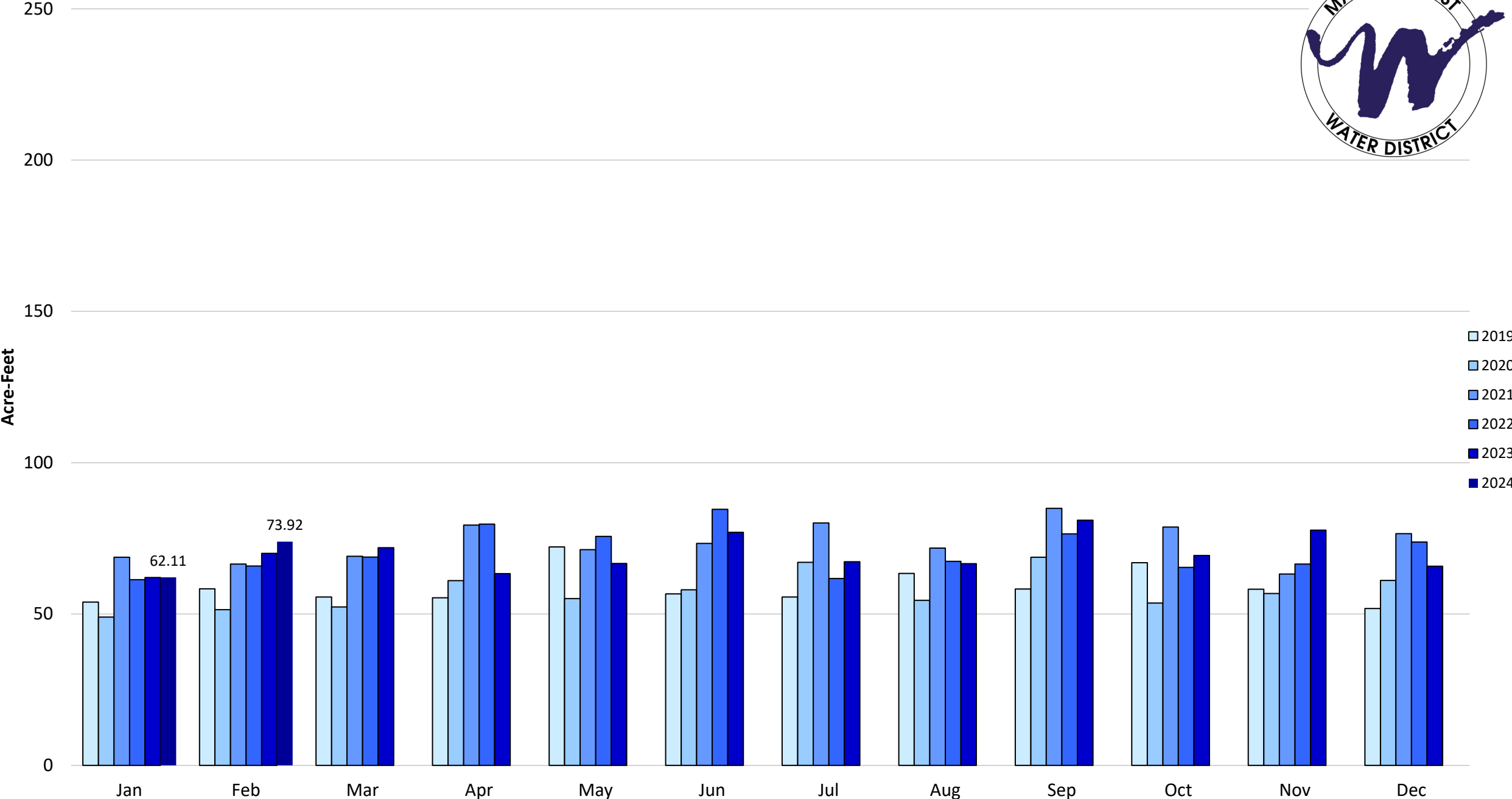
2008 - 2024 YTD Annual Total Water Consumption by Month



2019-2024 Single Family Consumption by Month

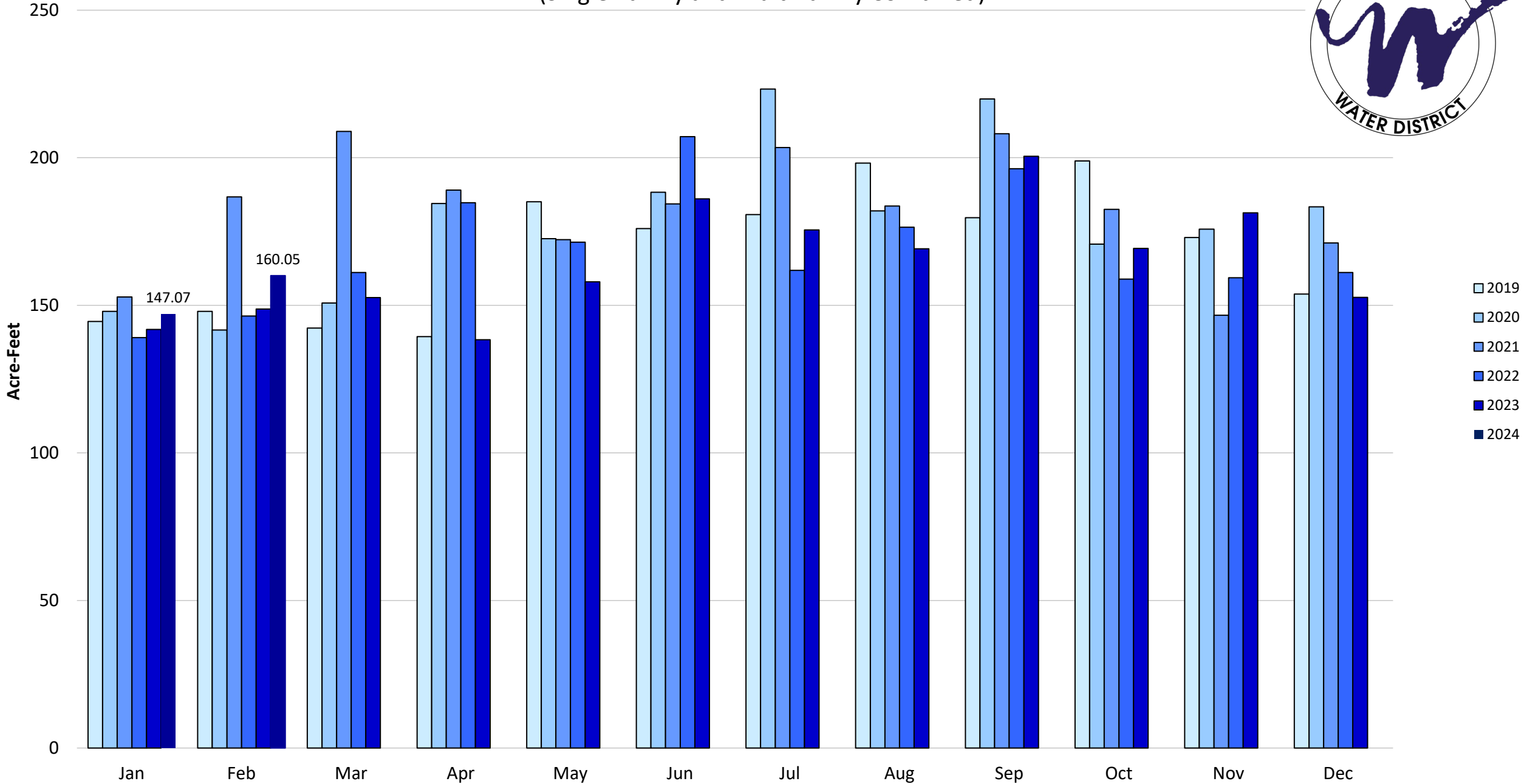


2019-2024 YTD Multi-Family Consumption by Month



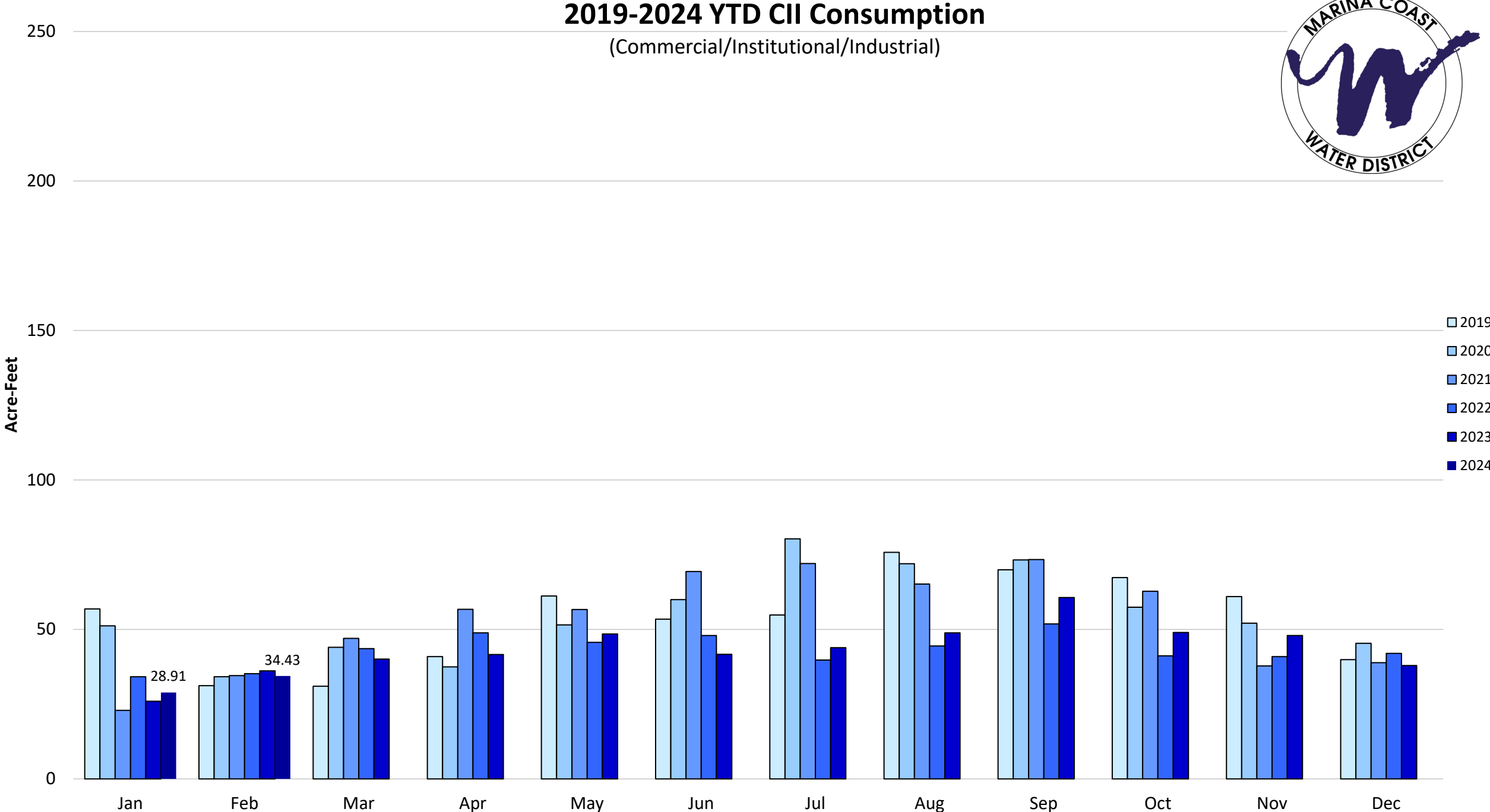
2019-2024 Residential Total Consumption by Month

(Single-Family and Multi-family Combined)

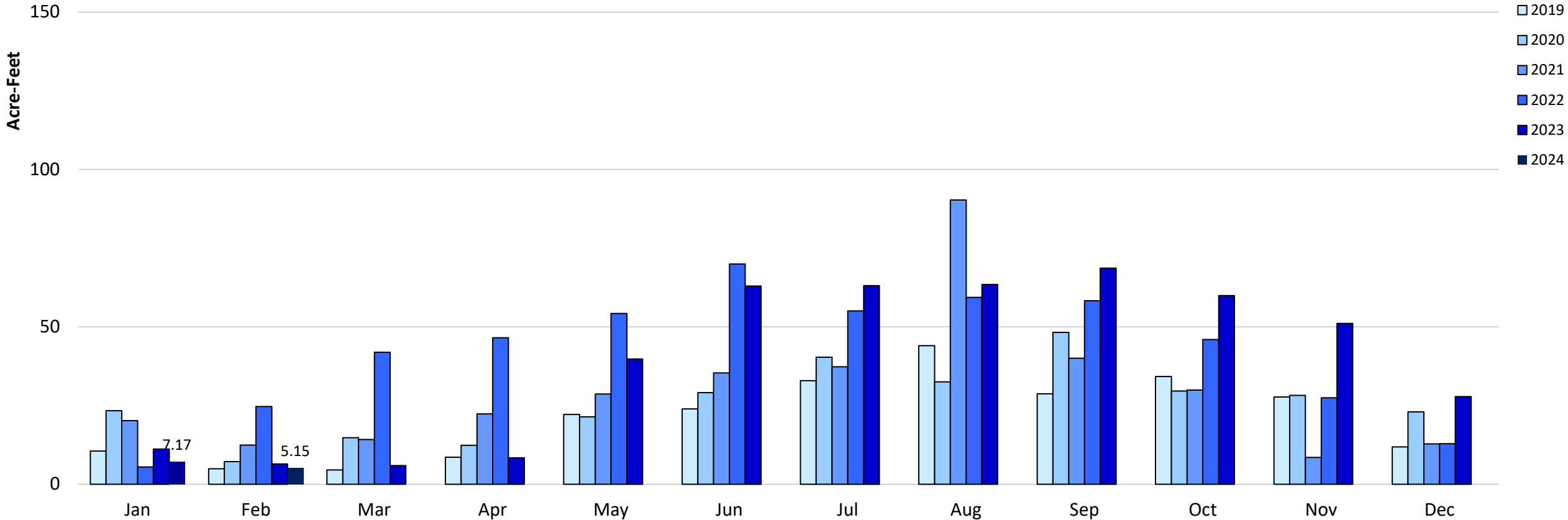


2019-2024 YTD CII Consumption

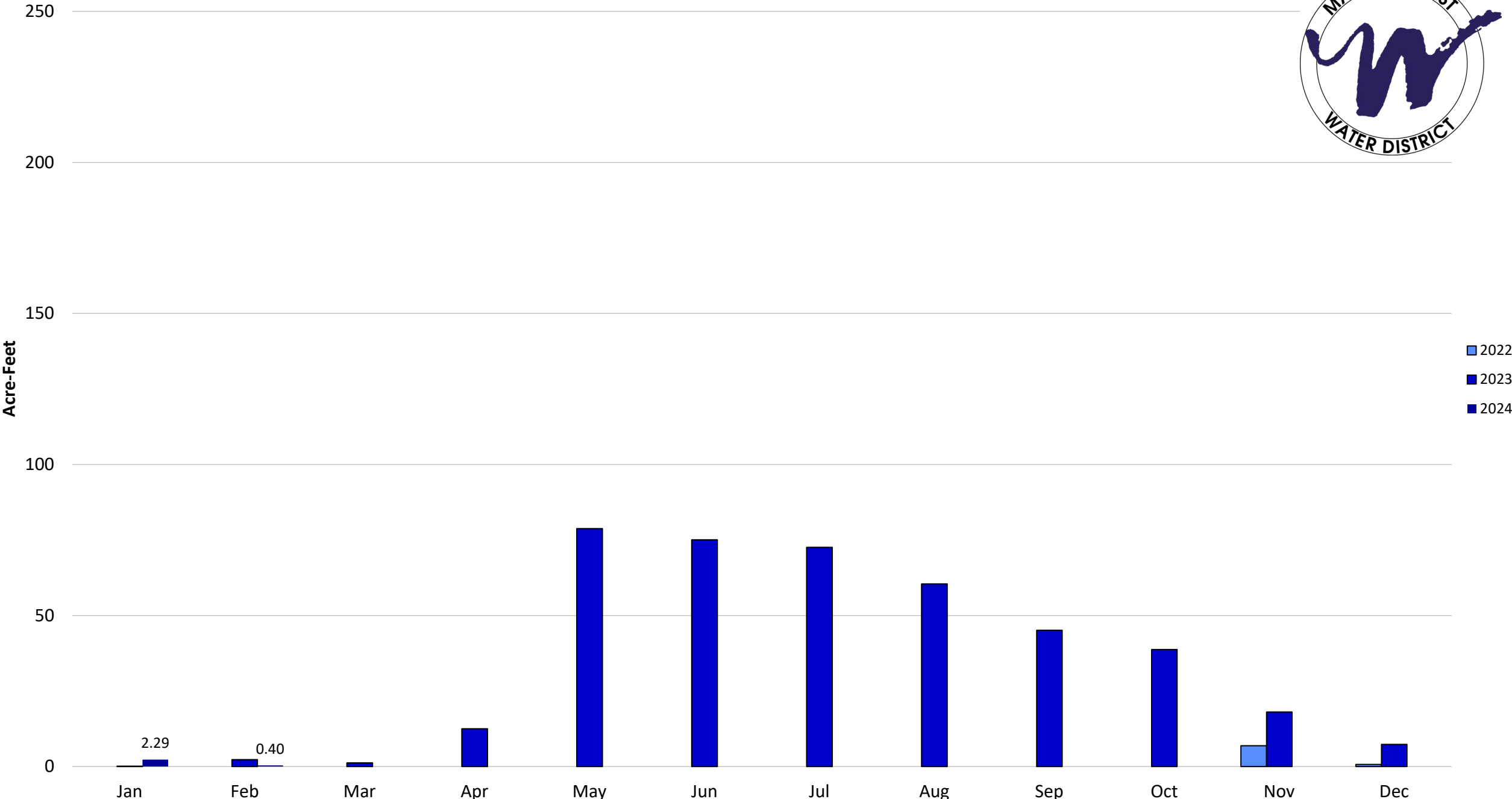
(Commercial/Institutional/Industrial)



2019-2024 YTD Potable Landscape Irrigation Consumption by Month

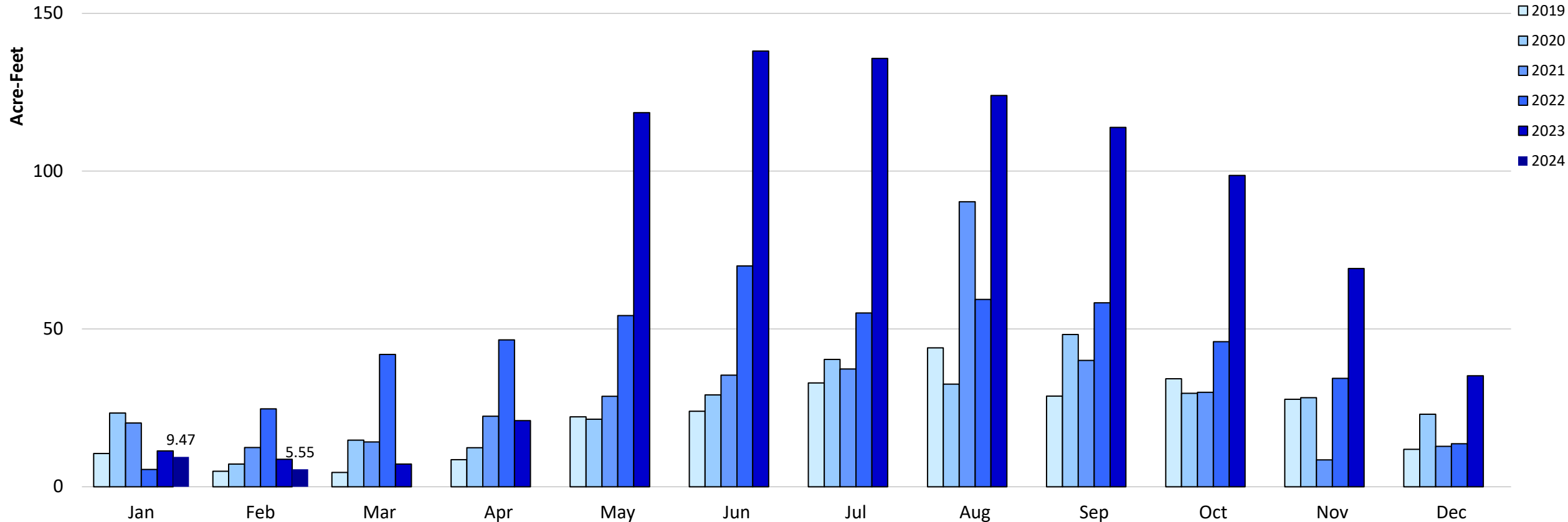


2022-2024 YTD Recycled Landscape Irrigation Consumption by Month

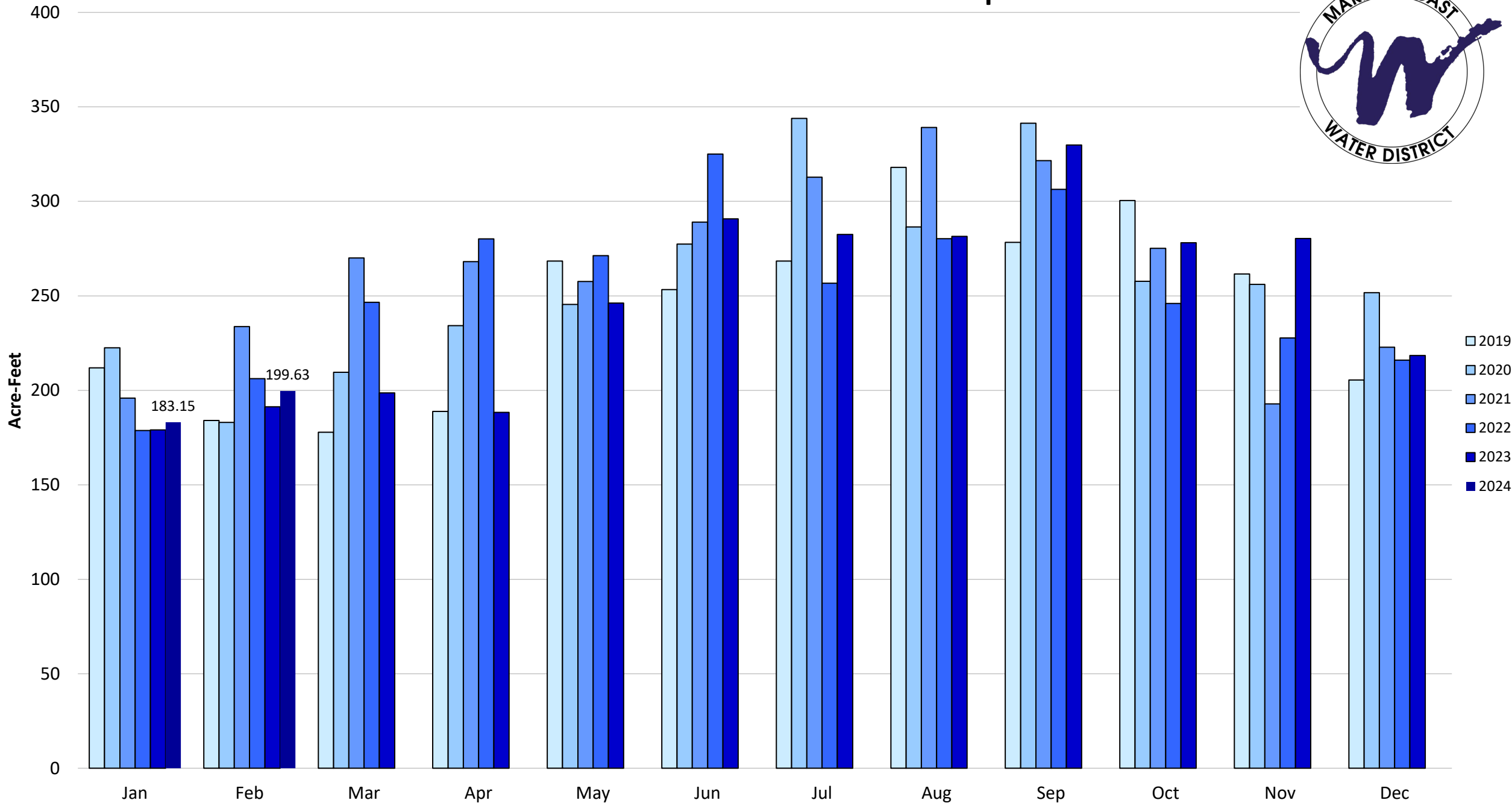


2019-2024 YTD Total Landscape Irrigation Consumption by Month

(Potable and Recycled Water combined)

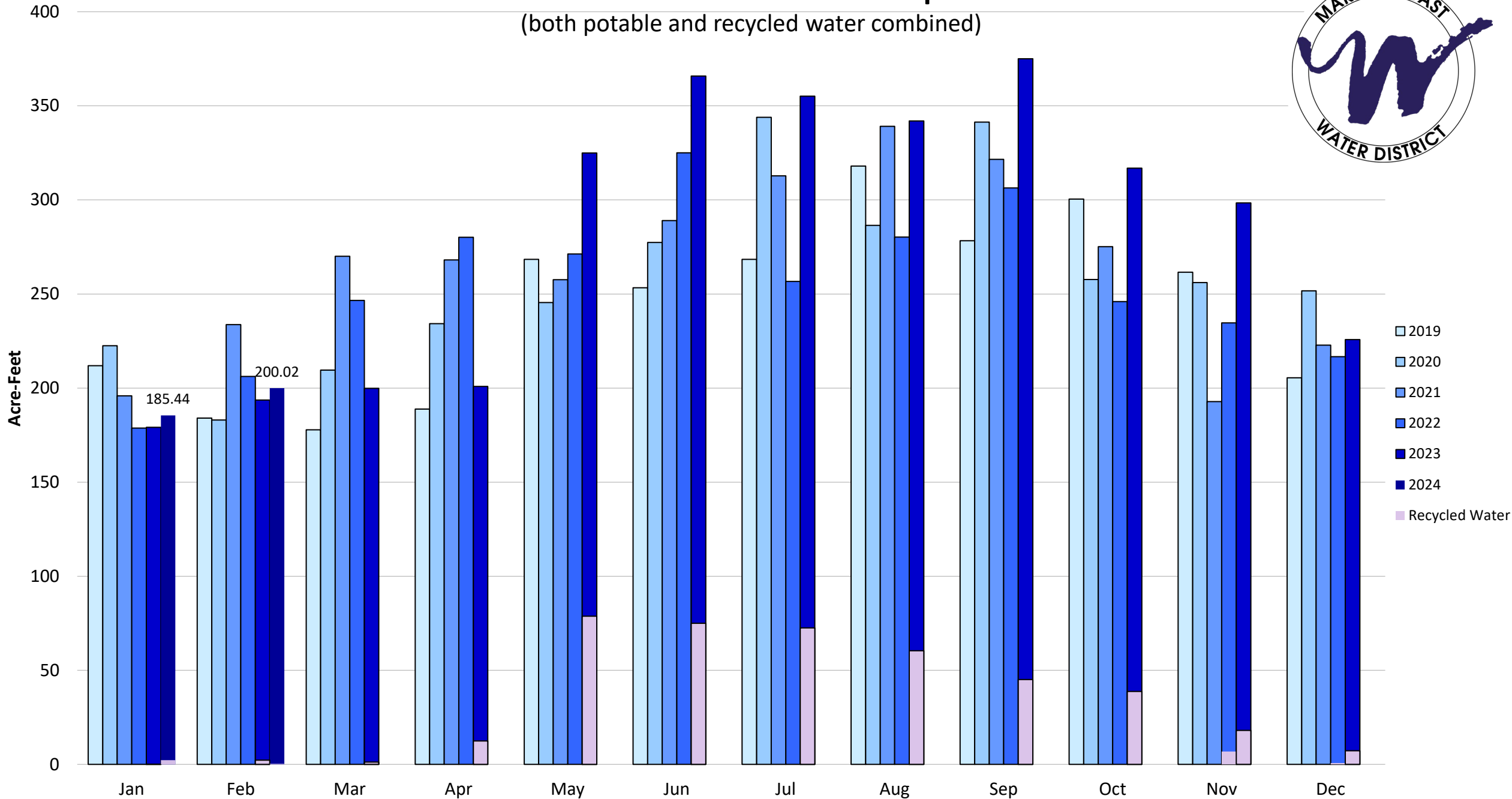


2019-2024 Total Potable Water Consumption

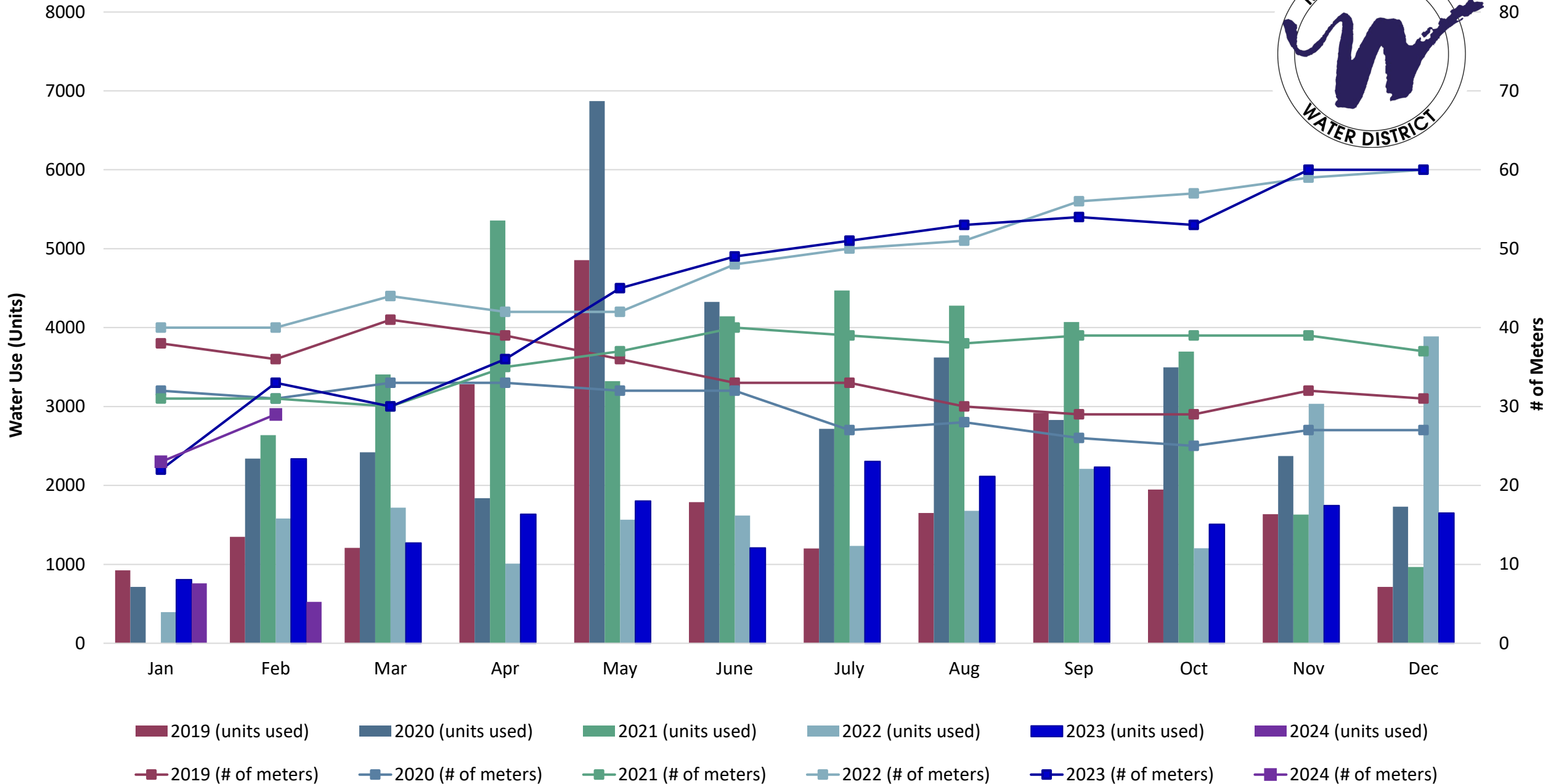


2019-2024 Total Water Consumption

(both potable and recycled water combined)

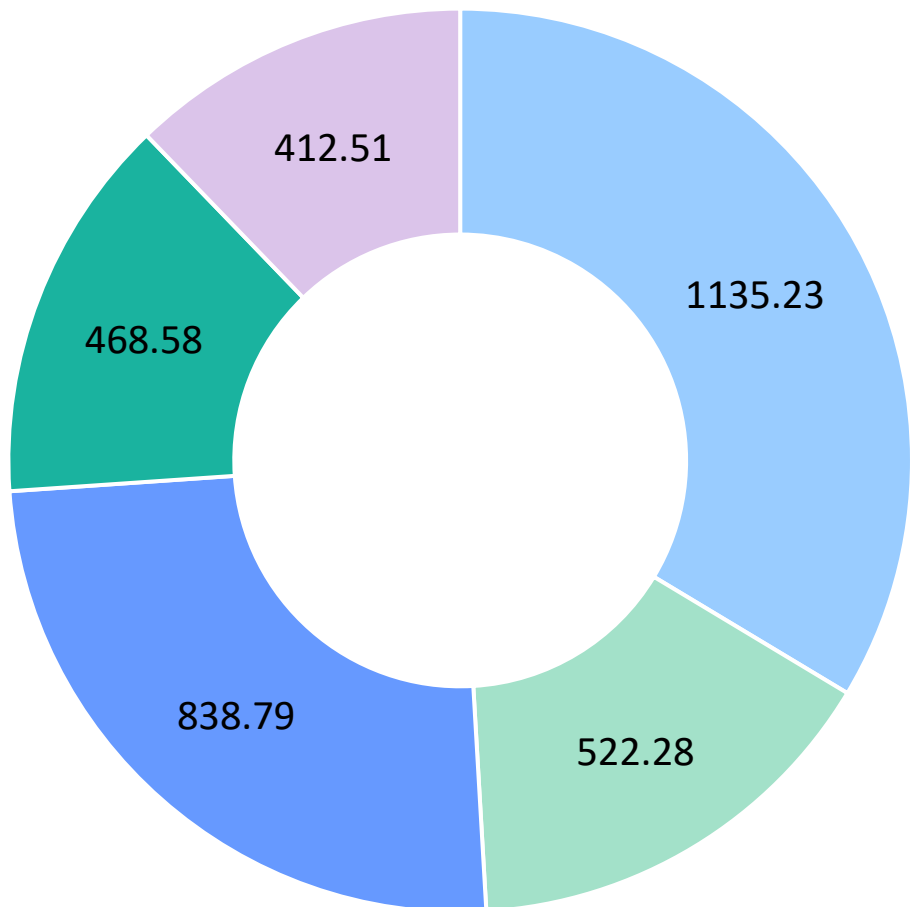


2019-2024 YTD Temporary Hydrant Meter Consumption and Meter Count



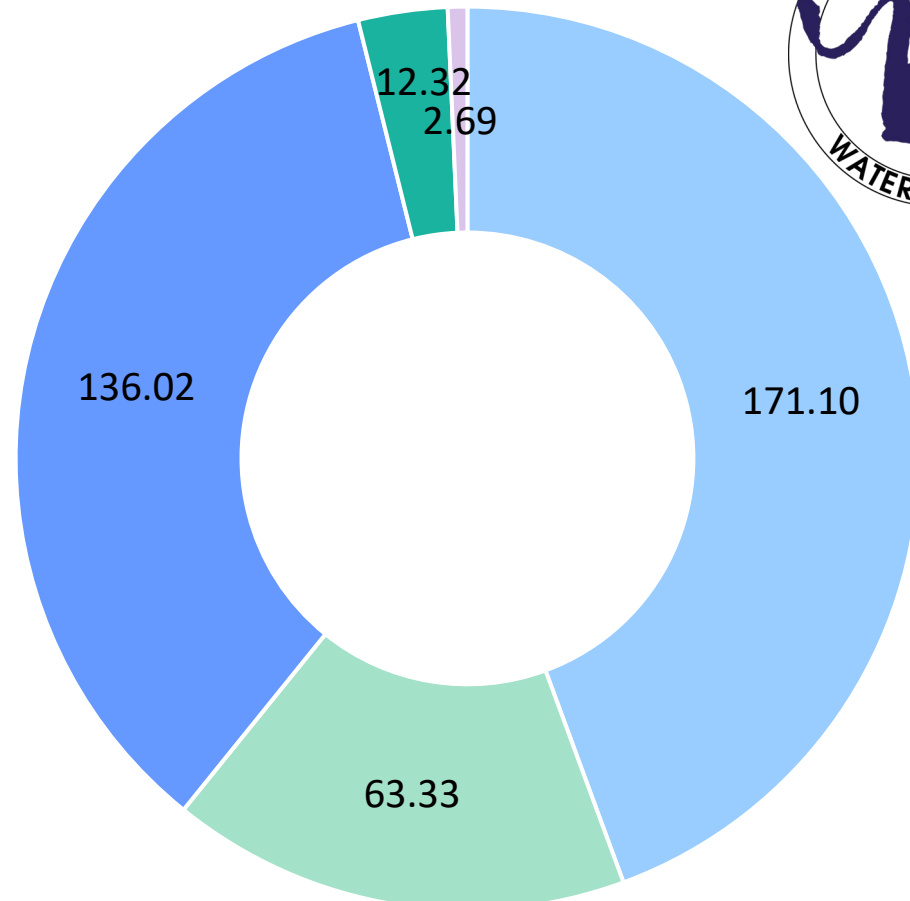


2023 Total Consumption (3,377.39 AF)



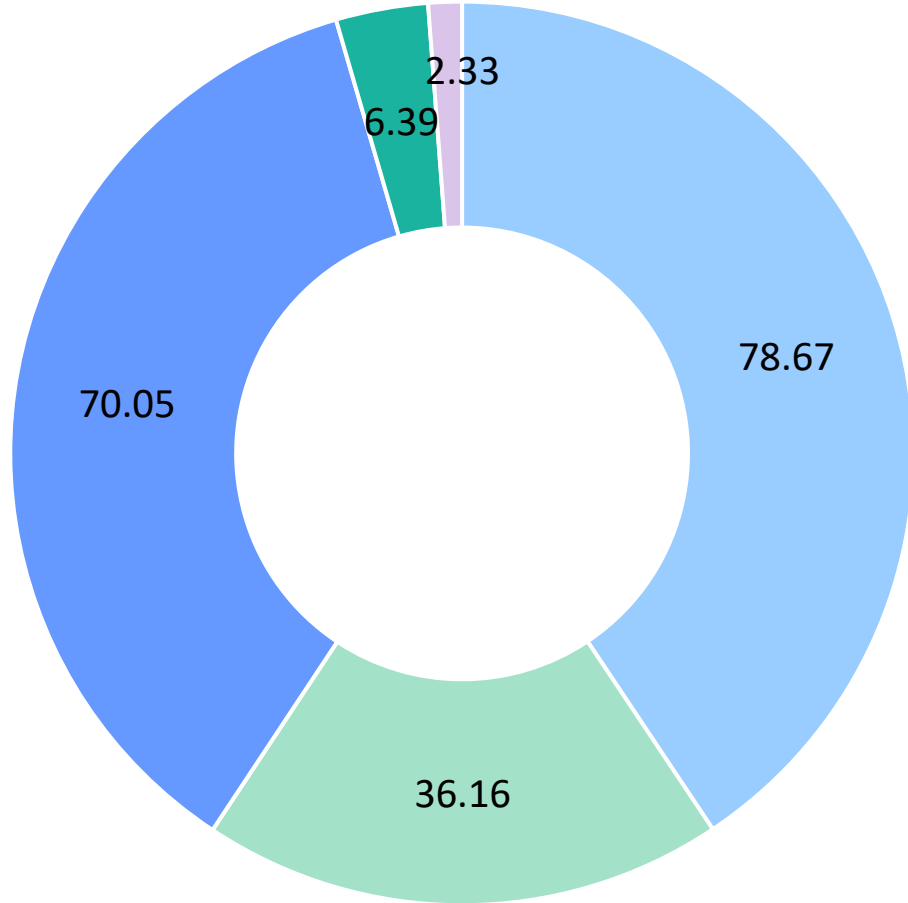
- Single Family = 33.6%
- Commercial/Institutional/Industrial = 15.5%
- Multi-Family = 24.8%
- Dedicated Landscape Irrigation (Potable Water) = 13.9%
- Recycled Water = 12.2%

2024 YTD Consumption (385.47 AF)



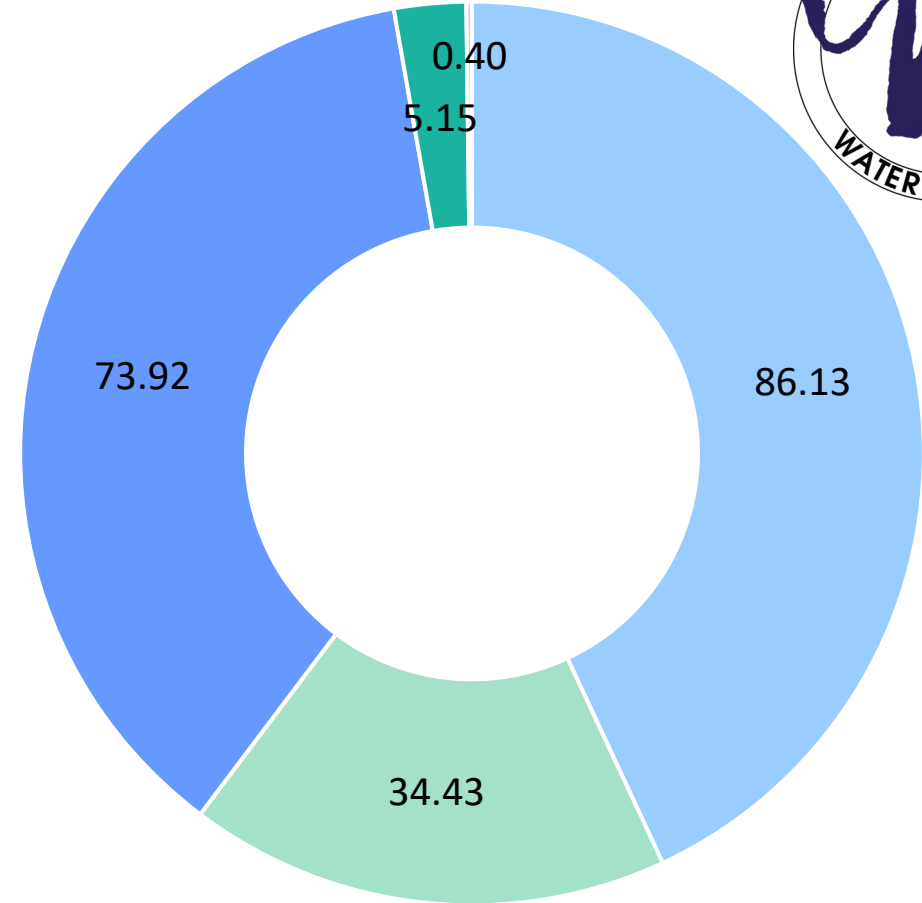
- Single Family = 44.4%
- Commercial/Institutional/Industrial = 16.4%
- Multi-Family = 35.3%
- Dedicated Landscape Irrigation (Potable Water) = 3.2%
- Recycled Water = 0.7%

February 2023 Consumption (193.61 AF)



- Single Family = 40.6%
- Commercial/Institutional/Industrial = 18.7%
- Multi-Family = 36.2%
- Dedicated Landscape Irrigation (Potable Water) = 3.3%
- Recycled Water = 1.2%

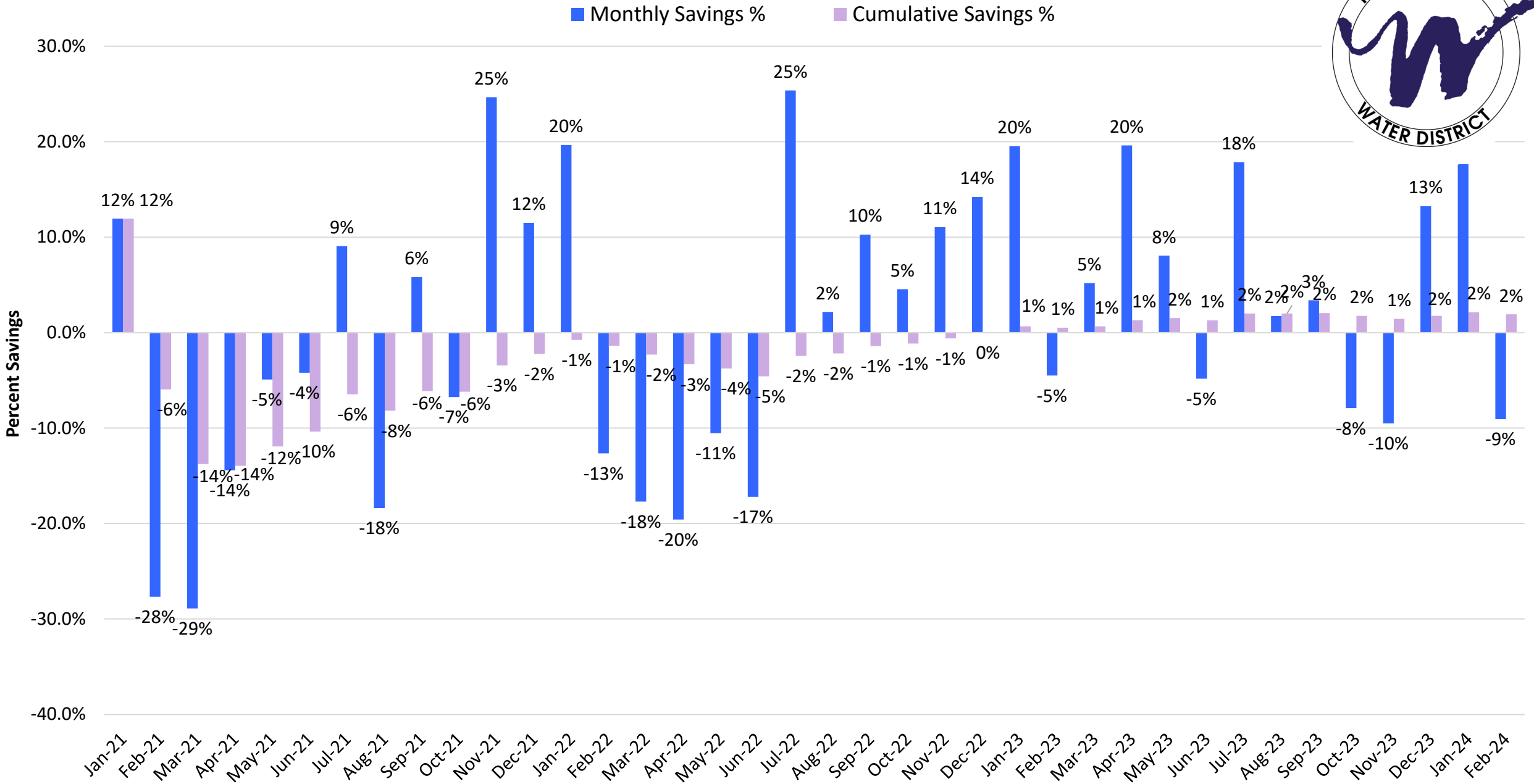
February 2024 Consumption (200.02 AF)



- Single Family = 43.1%
- Commercial/Institutional/Industrial = 17.2%
- Multi-Family = 37.0%
- Dedicated Landscape Irrigation = 2.6%
- Recycled Water = 0.2%

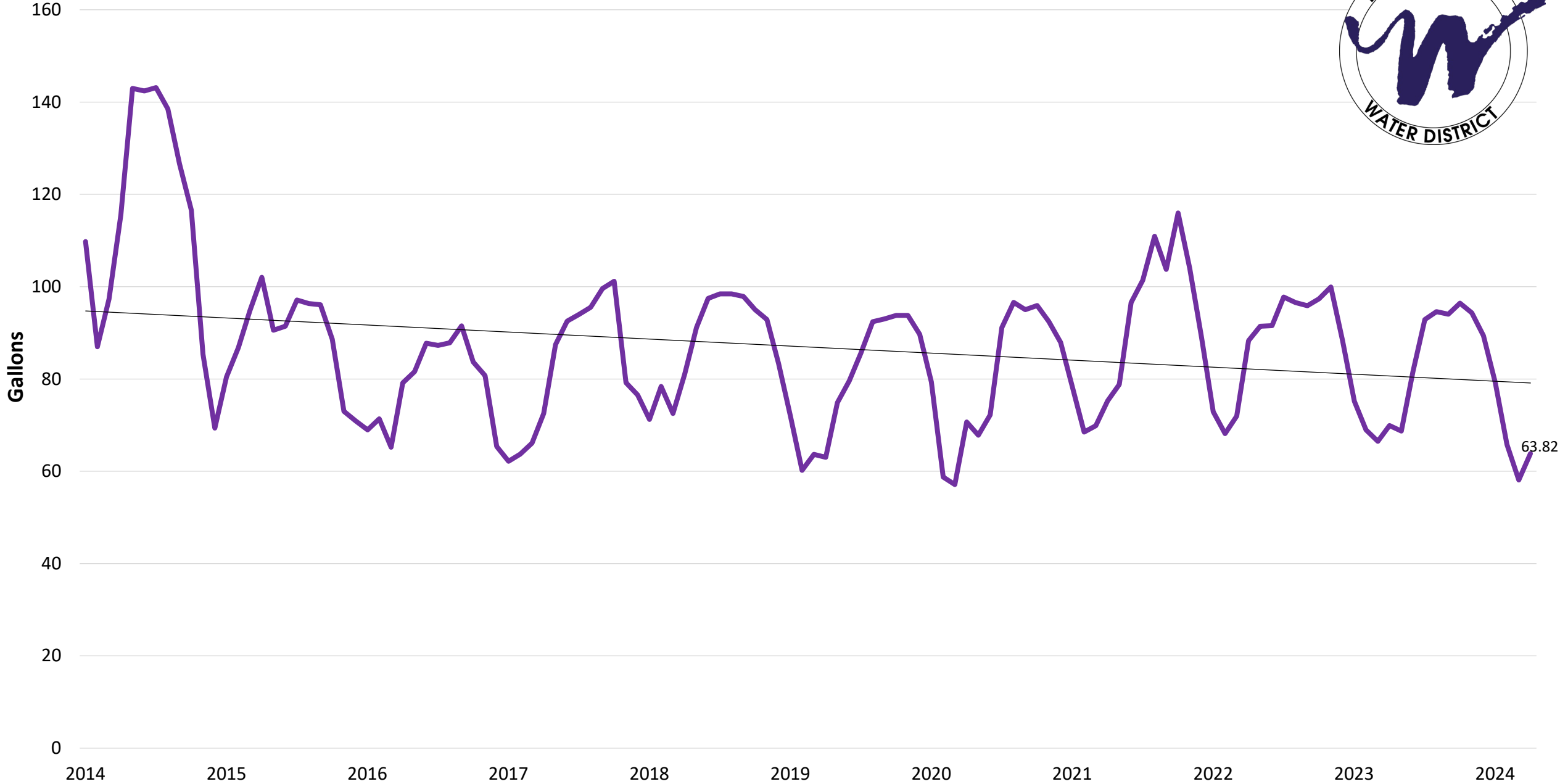


Monthly Potable Water Consumption Savings and Cumulative Savings Compared to 2020

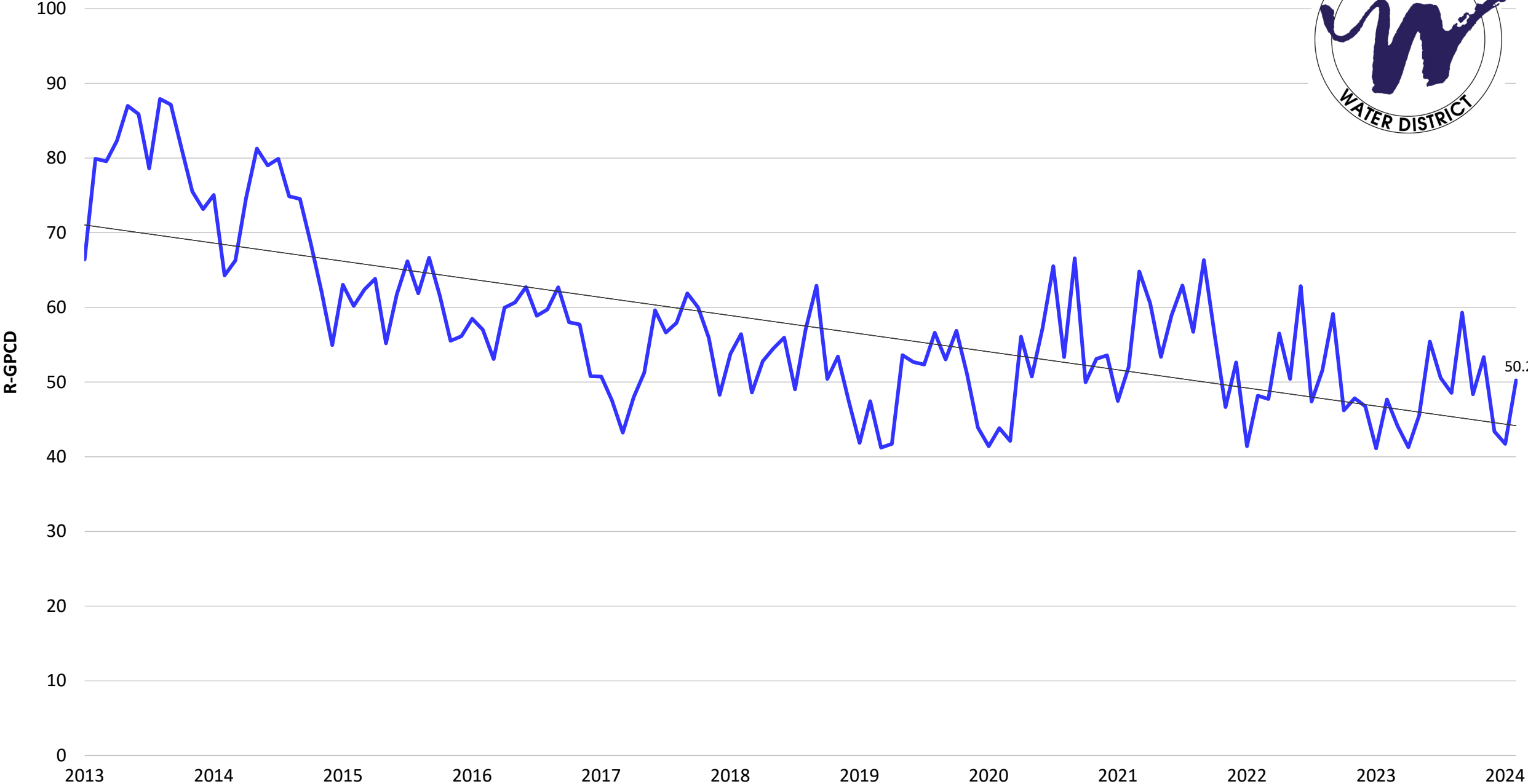


2014-2024 YTD Monthly Gallons Per Capita Day (GPCD)

(based on Well Production)



2013-2024 YTD Residential Gallons per Capita Day (R-GPCD)



2013-2024 YTD R-GPCD vs. GPCD

R-GPCD GPCD

